

MERCEDES SPRINTER

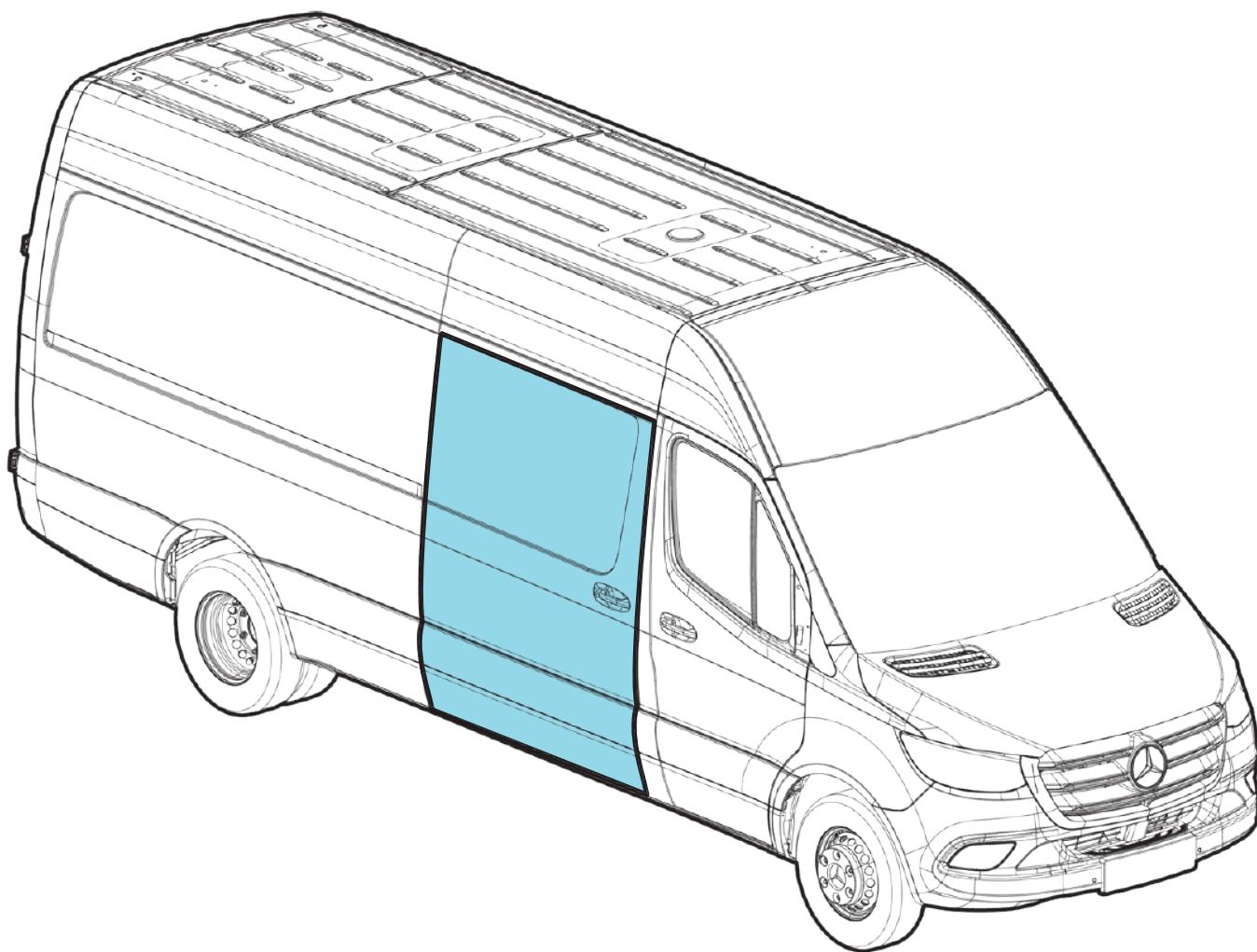
907, 910

from 2018

**(Using original vehicle remote's key and door
operating by pulling original door handle)**

ELECTRIC SLIDING DOOR INSTALLATION INSTRUCTIONS

7486-1373



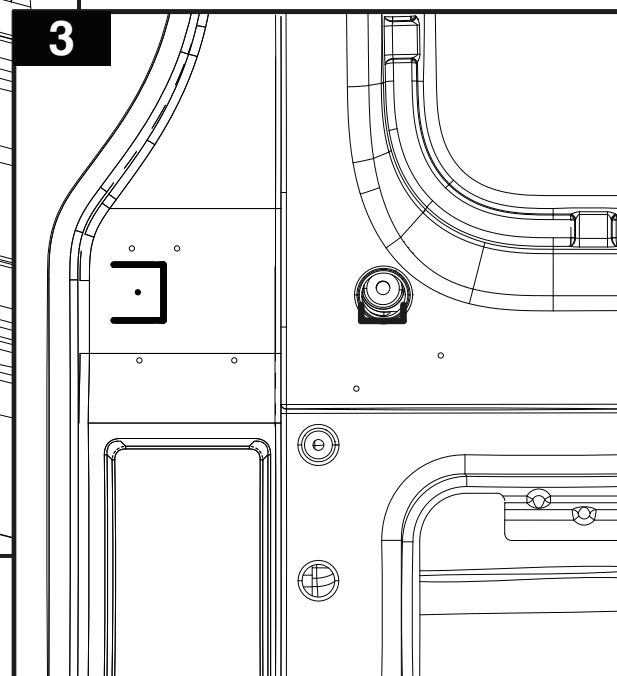
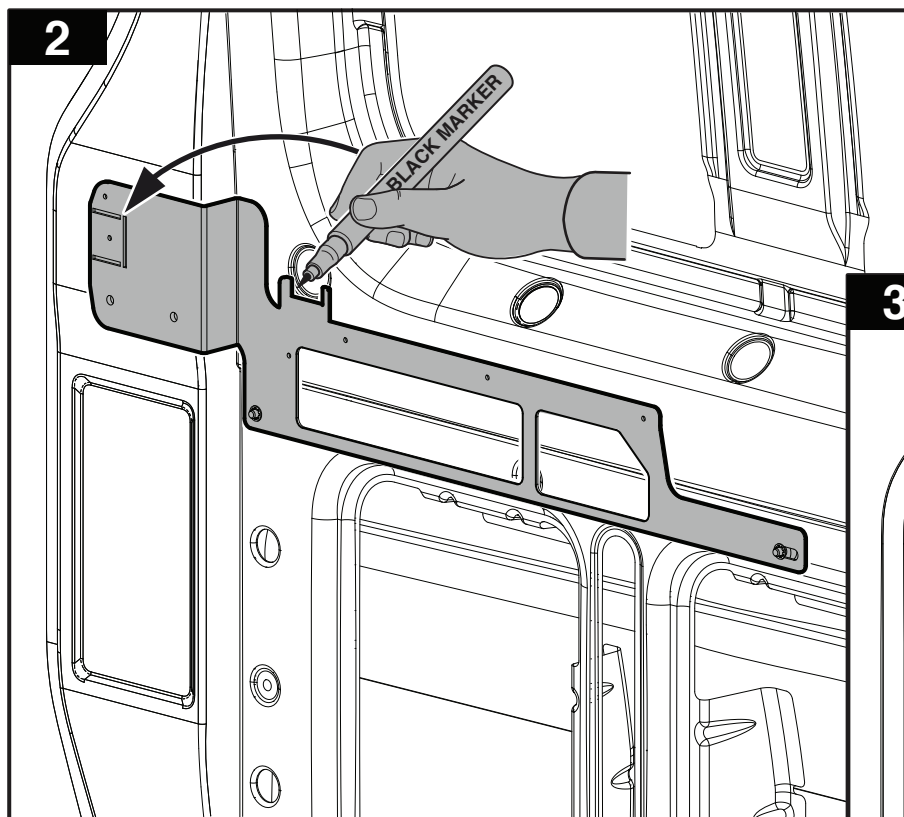
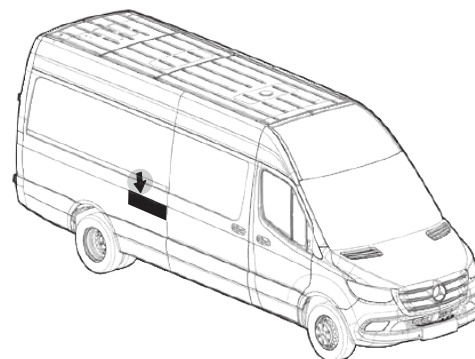
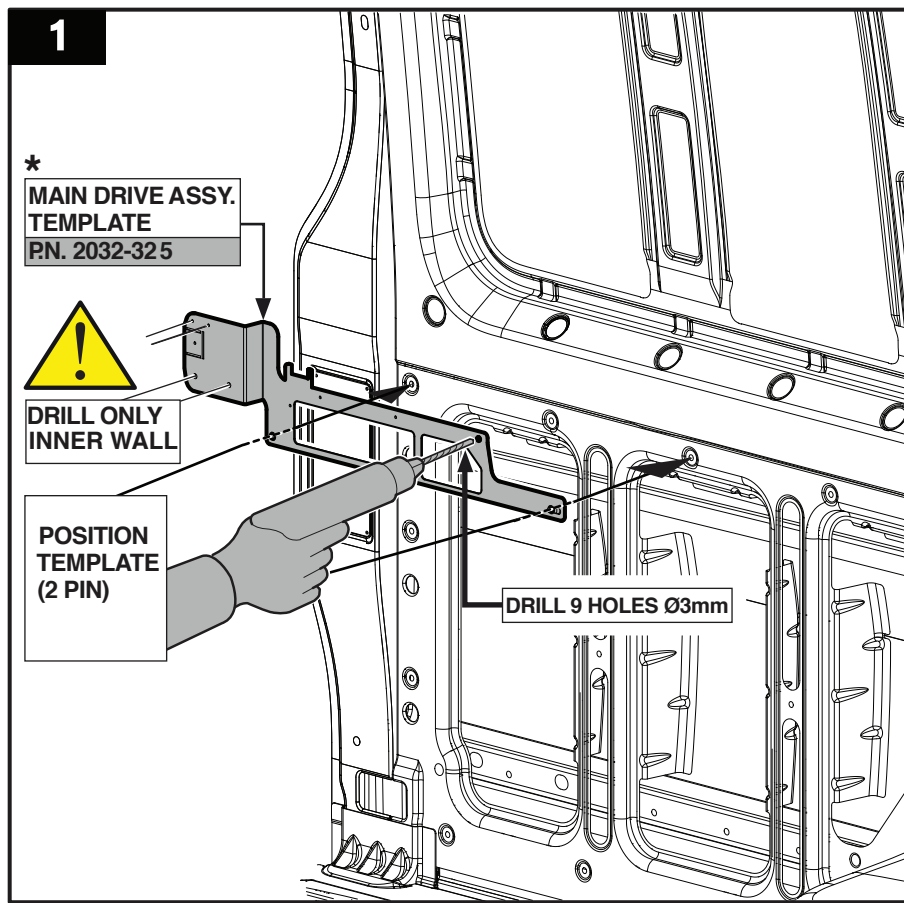
- DUE TO UNANNOUNCED CHANGES IN THE VEHICLES, BEFORE ORDERING, CHECK IF THE INSTALLATION DRAWINGS AND MATERIAL SUPPLY FITS YOUR SPECIFIC VEHICLE.
- ALEX ORIGINAL RESERVES THE RIGHT TO MAKE CHANGES IN ITS PRODUCTS WITHOUT ADVANCE NOTICE.

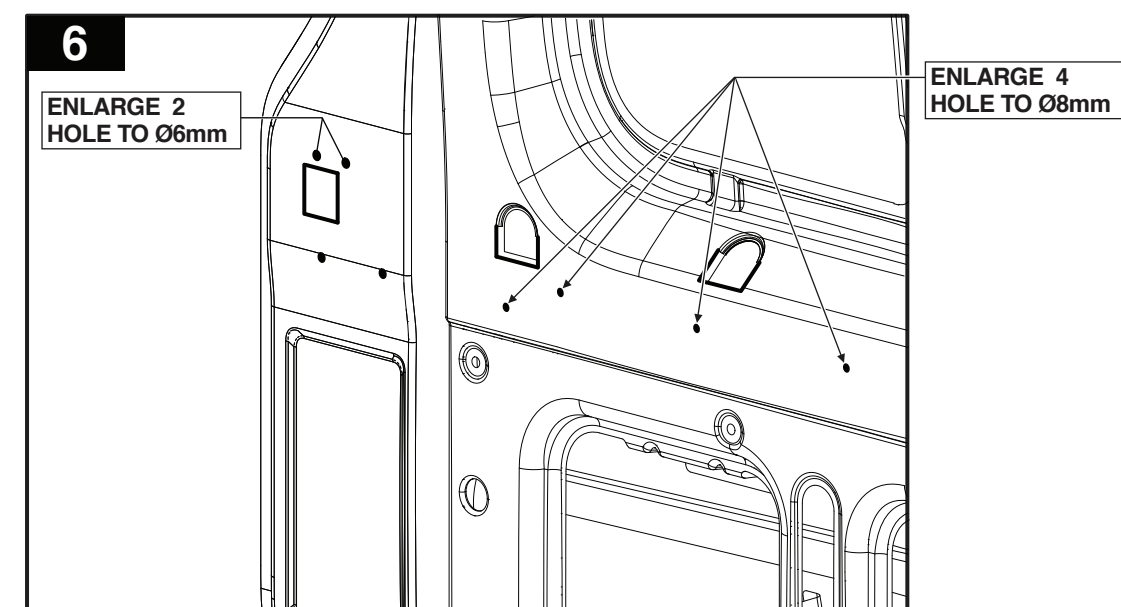
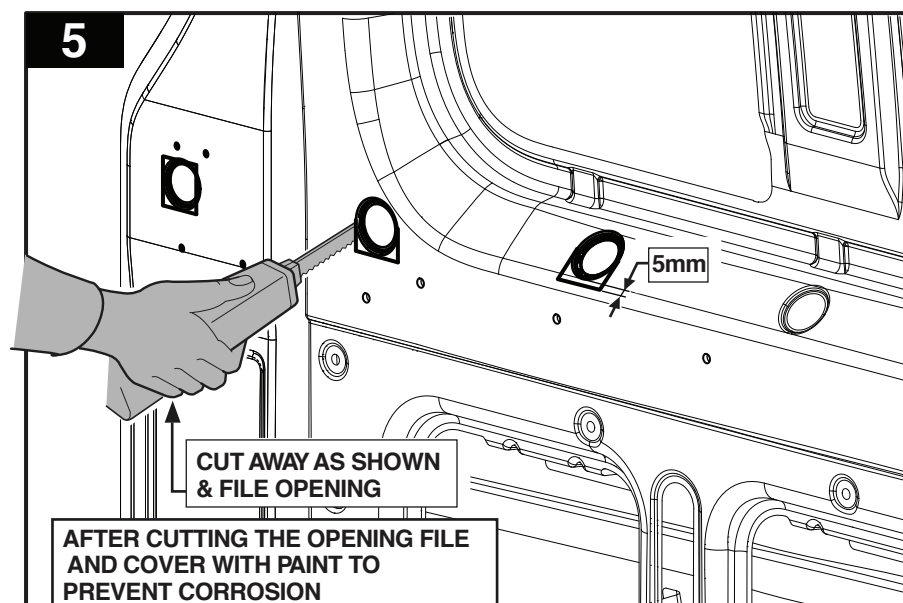
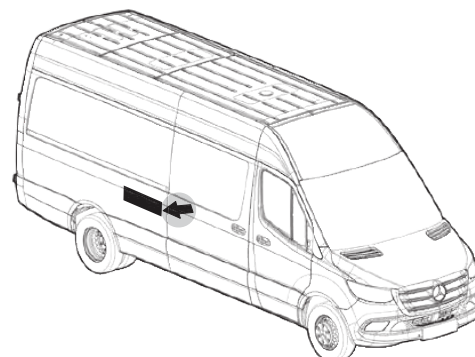
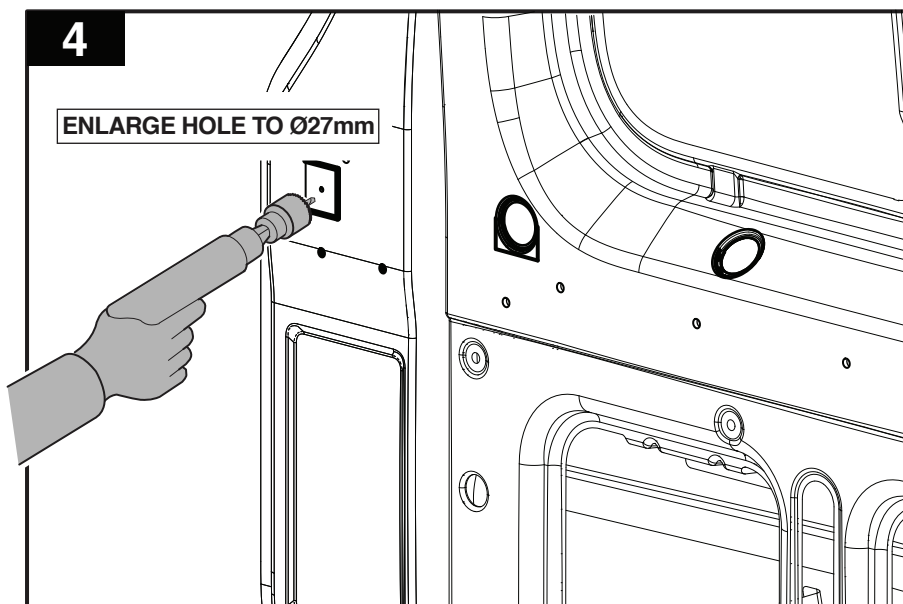


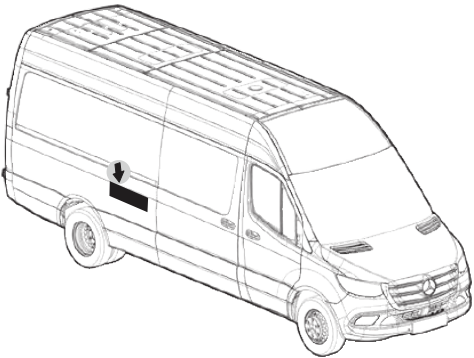
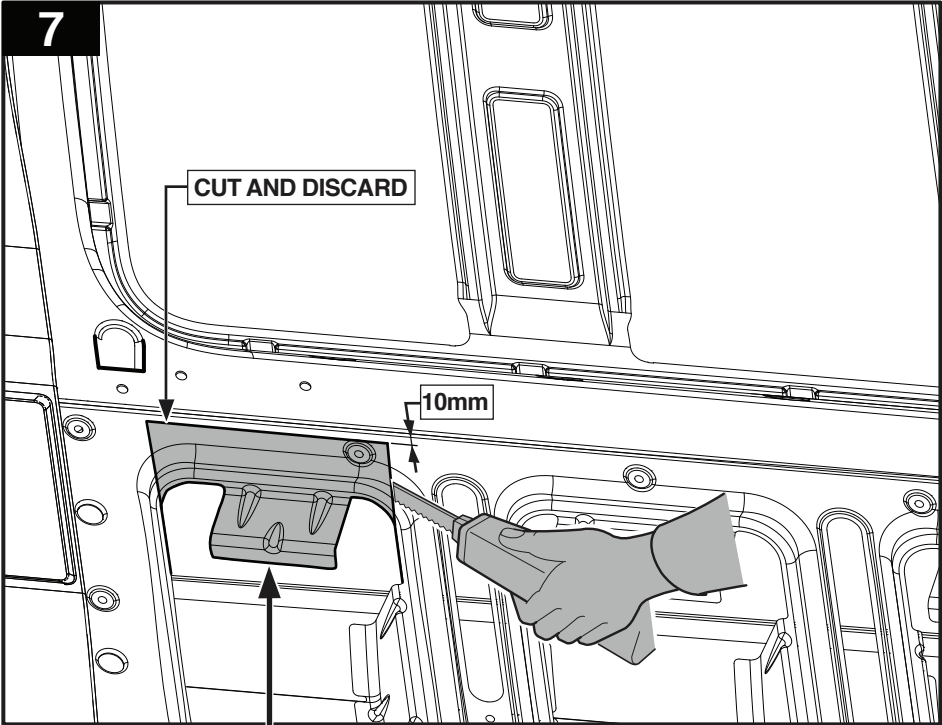
REQUIRED TOOLS

 4mm 5mm 6mm
 1/4" 8mm 10mm
 3/8" 15mm CR MV M10 30 45

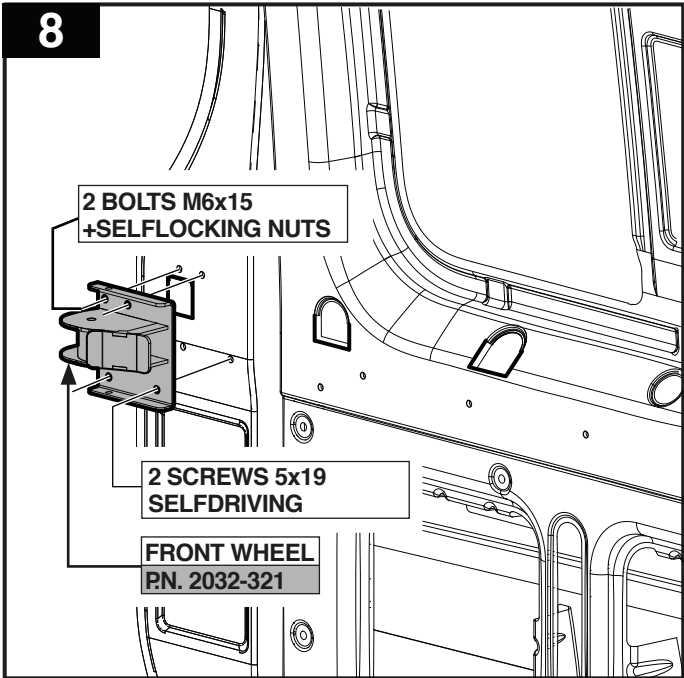
 Ø3mm (1/8") Ø6mm (1/4") Ø8mm (5/16") Ø10mm (3/8") Ø12mm (1/2") Ø14mm (9/16") Ø19mm (3/4") Ø27mm (1.1/16")
 5.5mm 8mm 10mm 15mm
 Ø10mm (3/8")

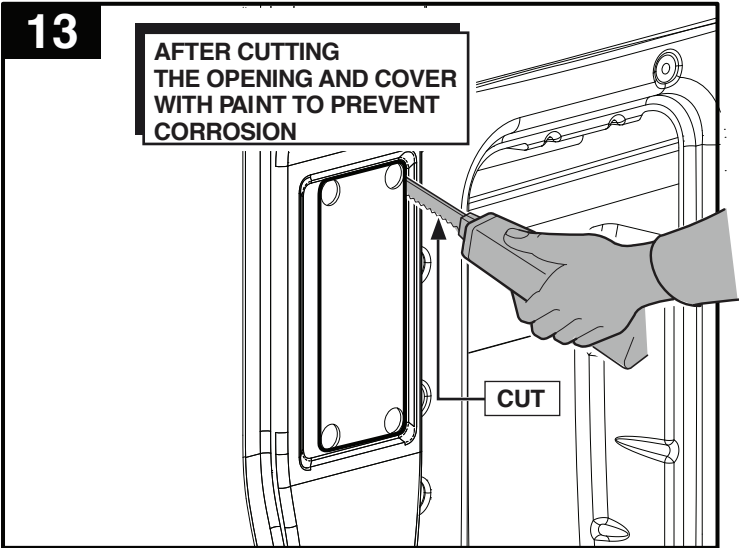
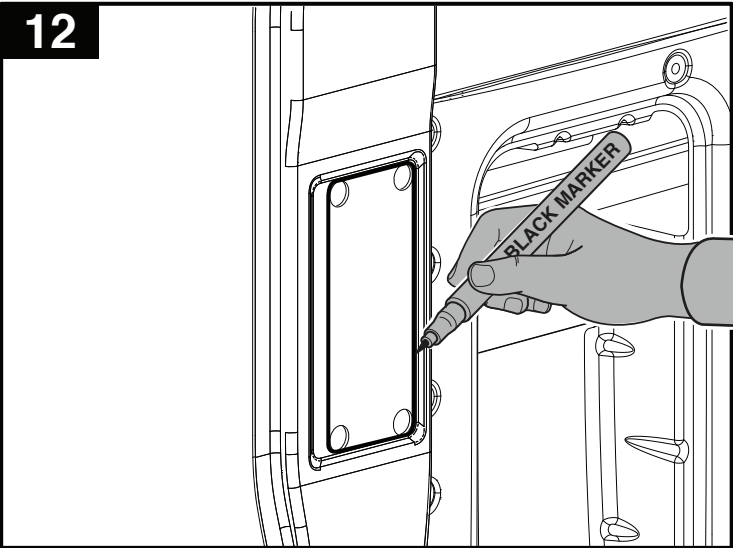
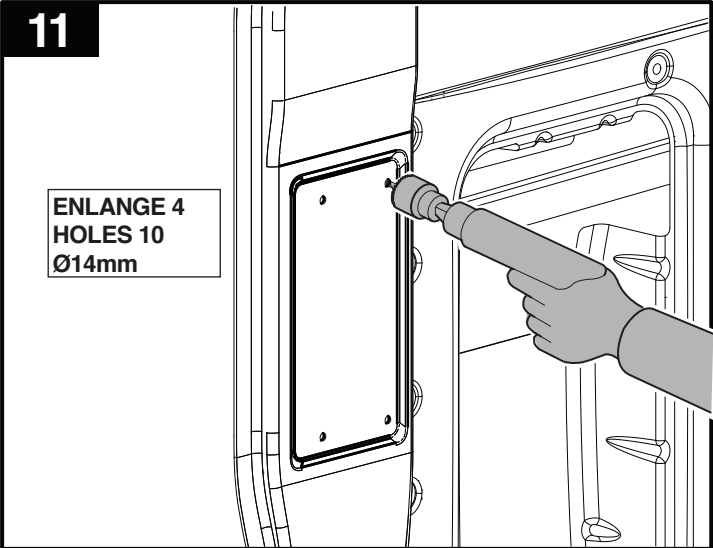
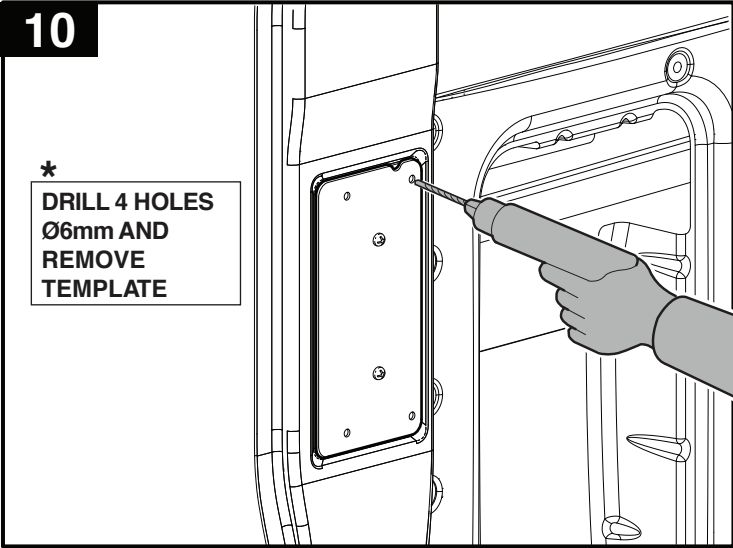
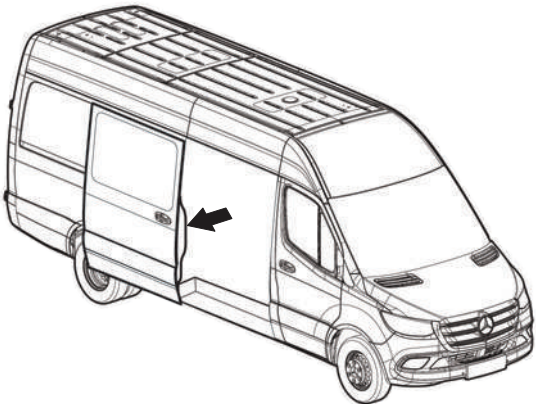
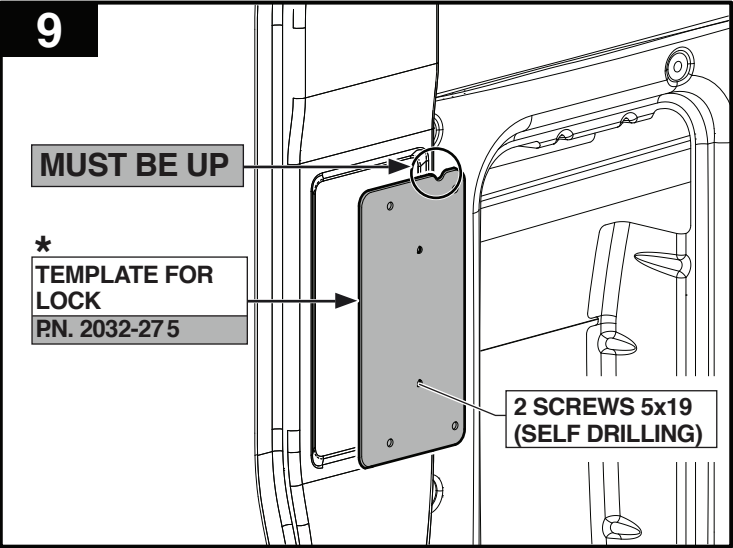


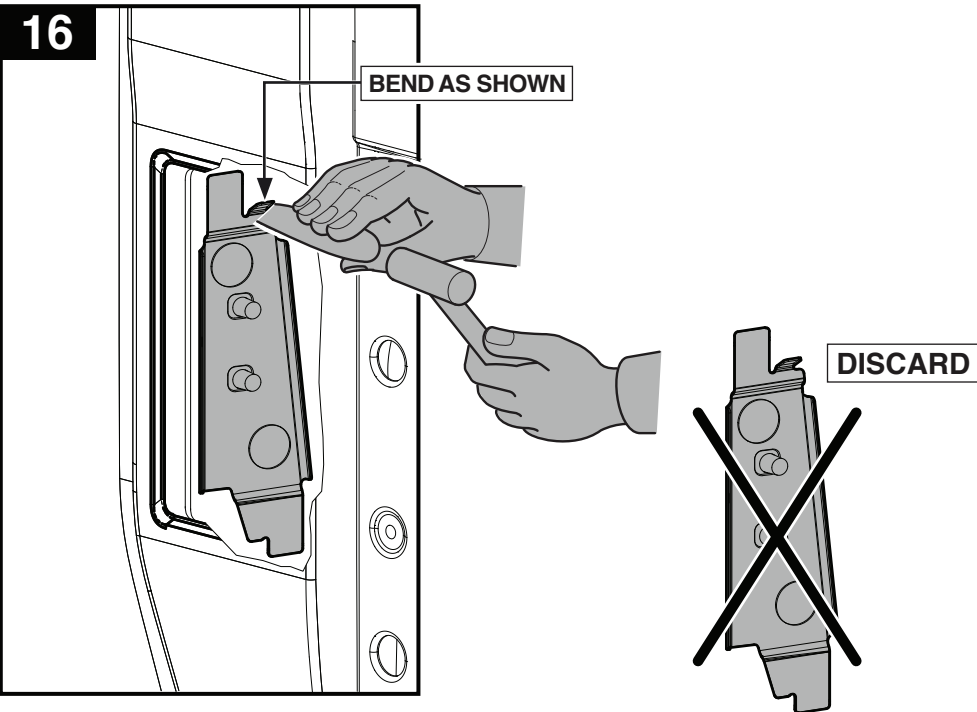
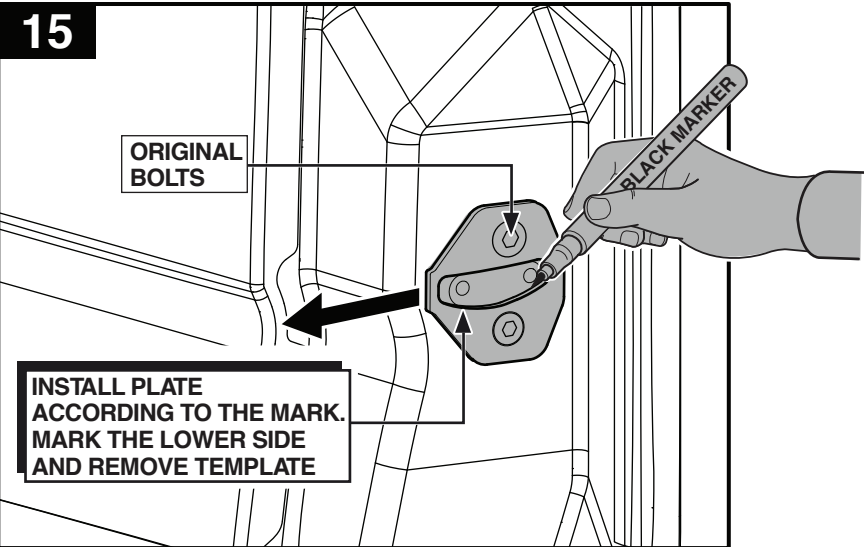
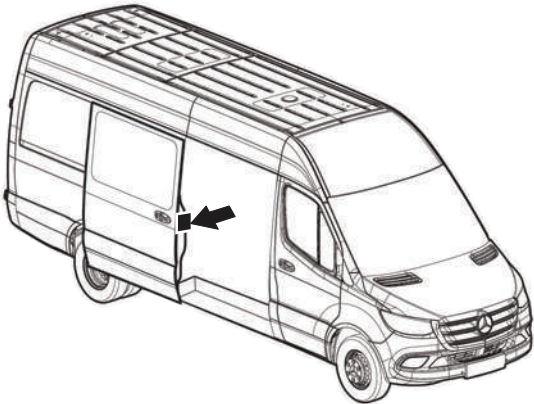
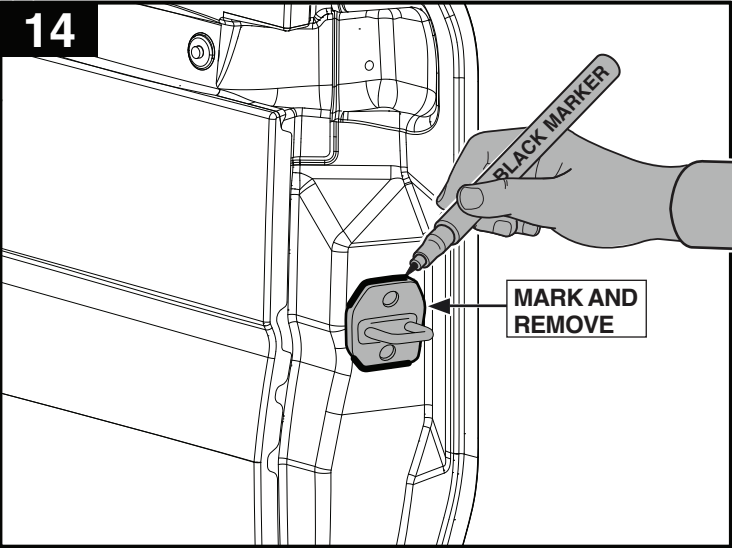


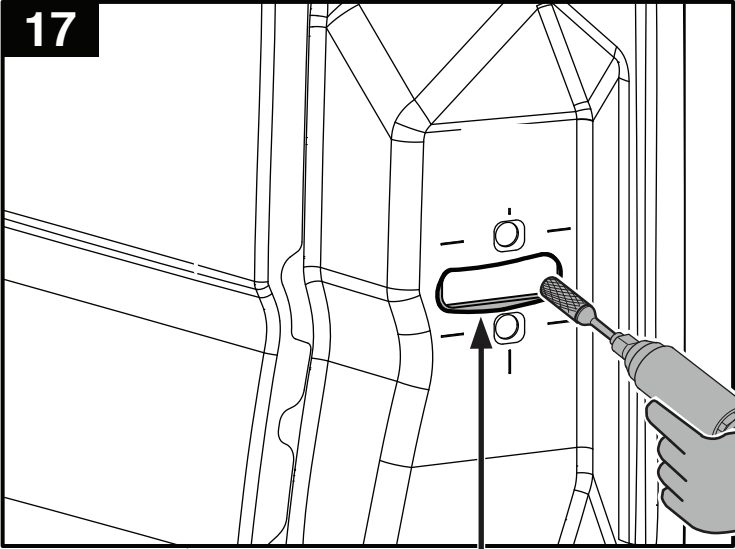


AFTER CUTTING
THE OPENING
COVER WITH PAINT
TO PREVENT CORROSION

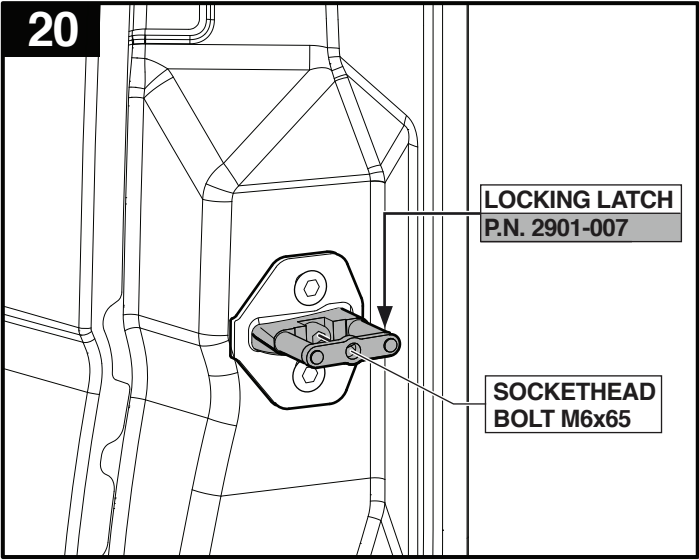
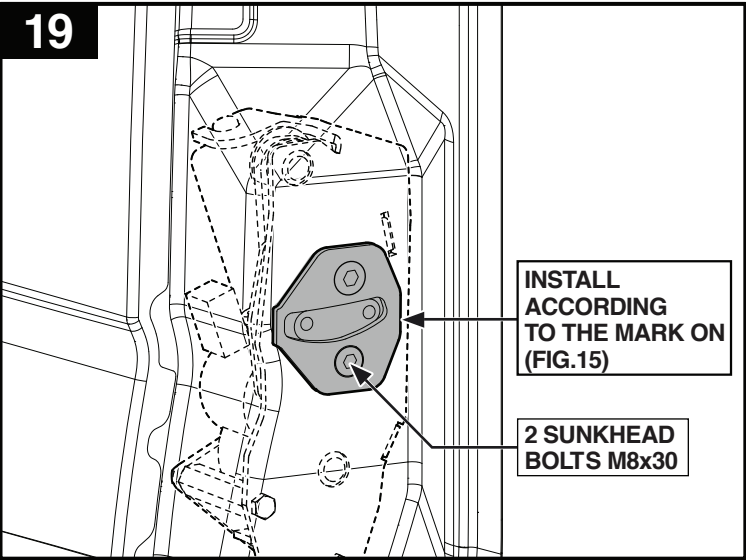
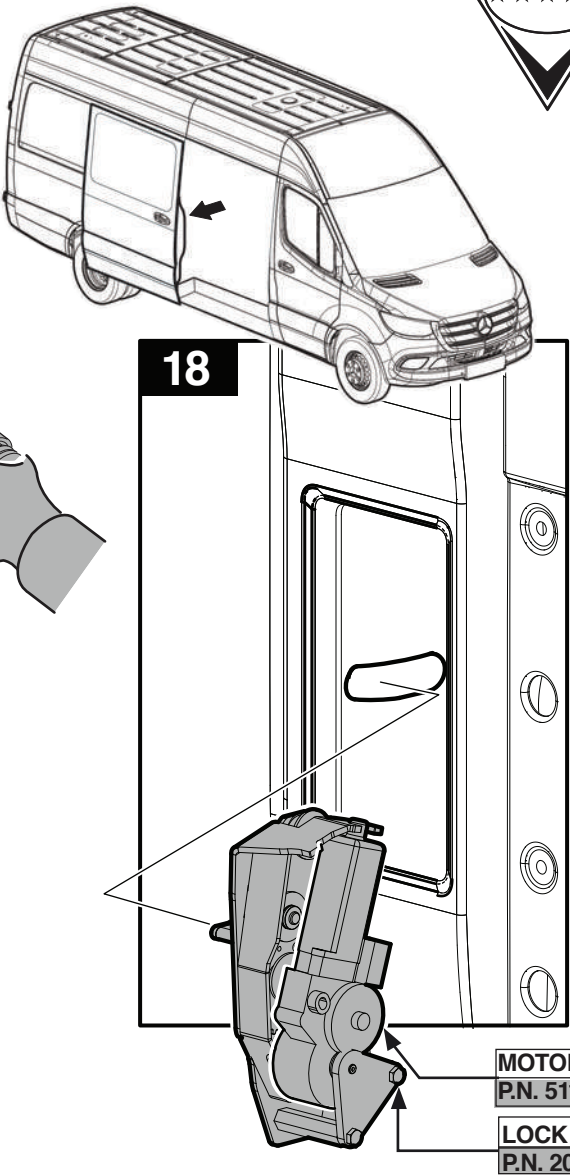


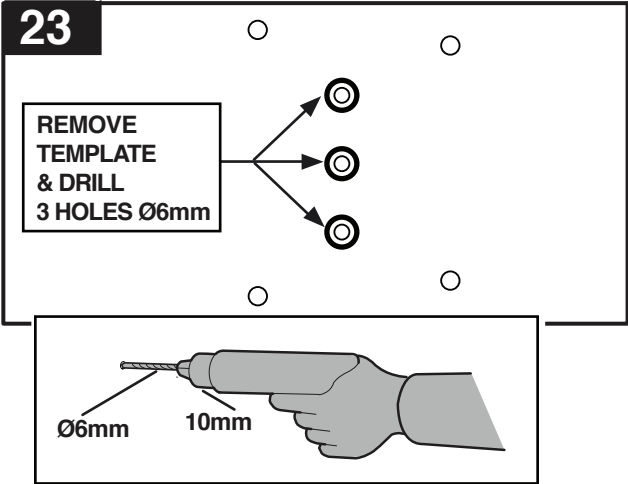
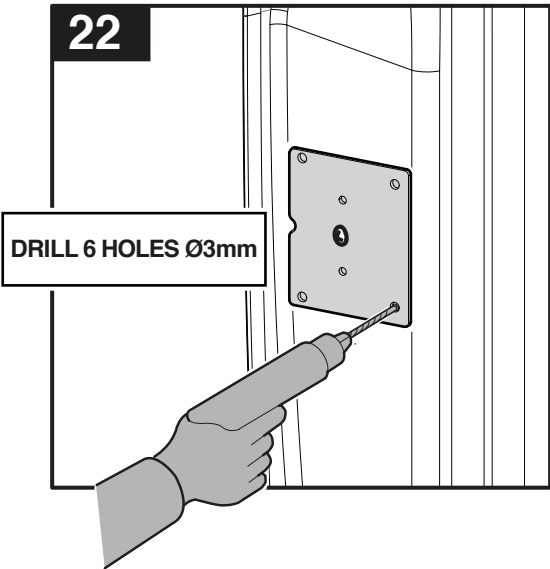
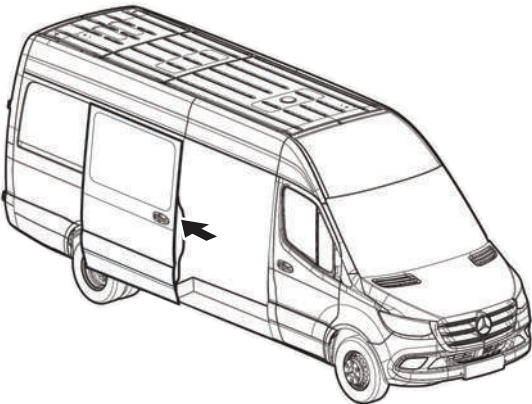
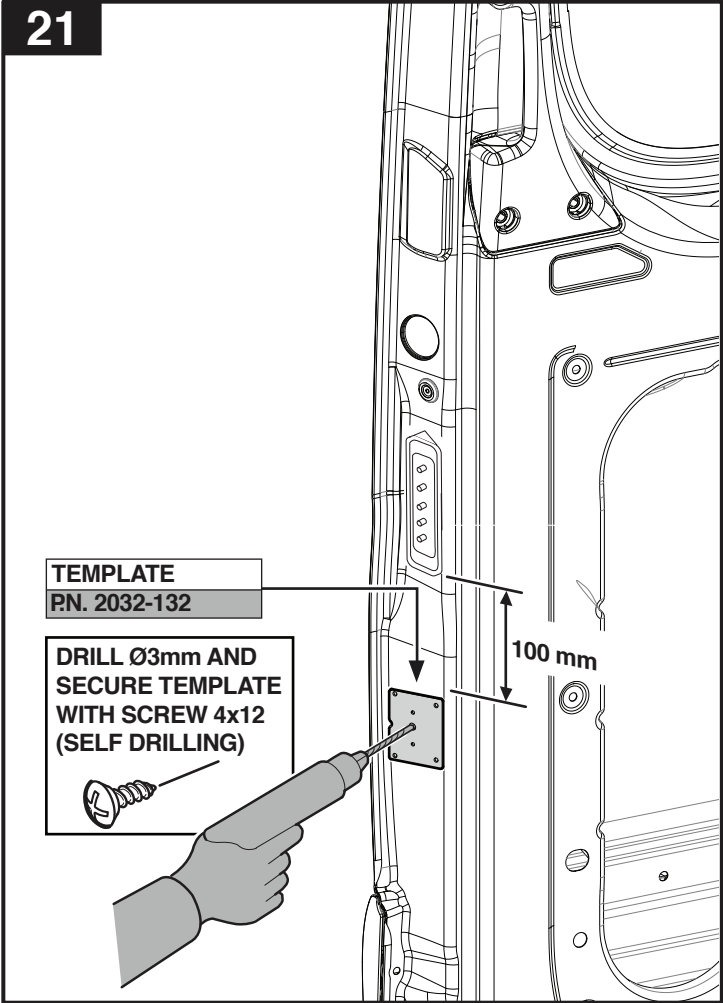




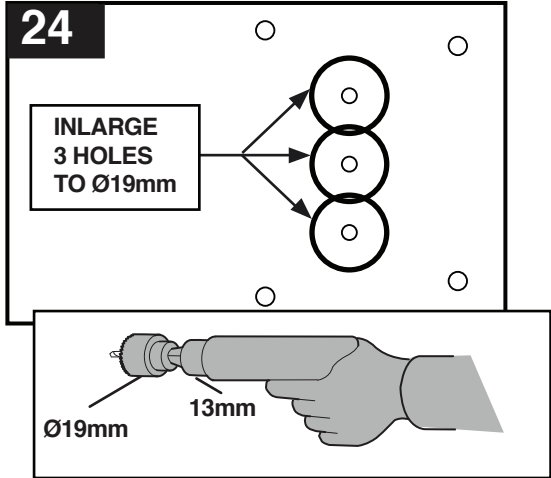


GRIND AWAY AS MARKED
AND COVER WITH PAINT
TO PREVENT CORROSION





AFTER FINISHING THE OPENING
COVER WITH PAINT
TO PREVENT CORROSION



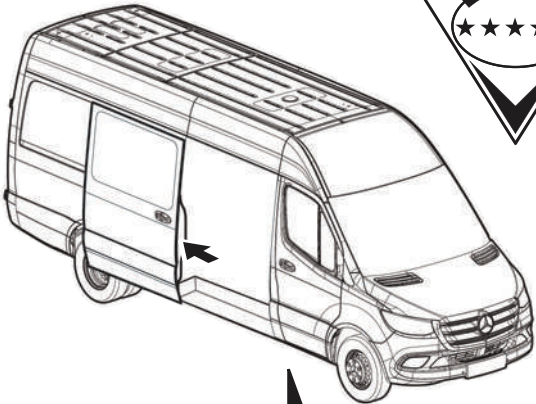


25

CONTACT HOLDER
P.N. 2032-131

2 PINS FOR TEMPLATE
P.N. 2471-588

INSTALL CONTACT HOLDER WITH 4 SCREWS 4x16 (STAINLESS STEEL)



CLOSE THE DOOR FIRMLY TO MAKE MARKS ON THE DOOR FRAME (PILLAR B)

26

DRILL 2 HOLES Ø3mm

27

REMOVE & DISCARD 2 PINS

28

INSTALL CONTACT PANEL (MALE) USING 2 SUNKHEAD SCREWS 4x16 (STAINLESS STEEL)

YELLOW WIRE

CONTACT PANEL (MALE)
P.N. 3710-3327

BLACK WIRE

WARNING

29

INSTALL CONTACT PANEL (FEMALE)
AND THE CONTACT PANEL SPACER
USING 2 SUNKHEAD SCREWS 4x25
(STAINLESS STEEL)

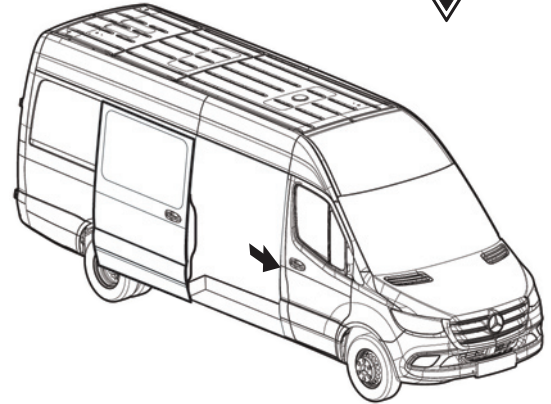
CONTACT PANEL
SPACER
P.N. 2032-343

YELLOW WIRE



BLACK WIRE

CONTACT PANEL
(FEMALE)
P.N. 3710-333



30

CONNECT TO CABLE
N° 4 (BLUE / BROWN)
FOR OPEN / CLOSE SIGNAL
(SEE PAGE 26)

31

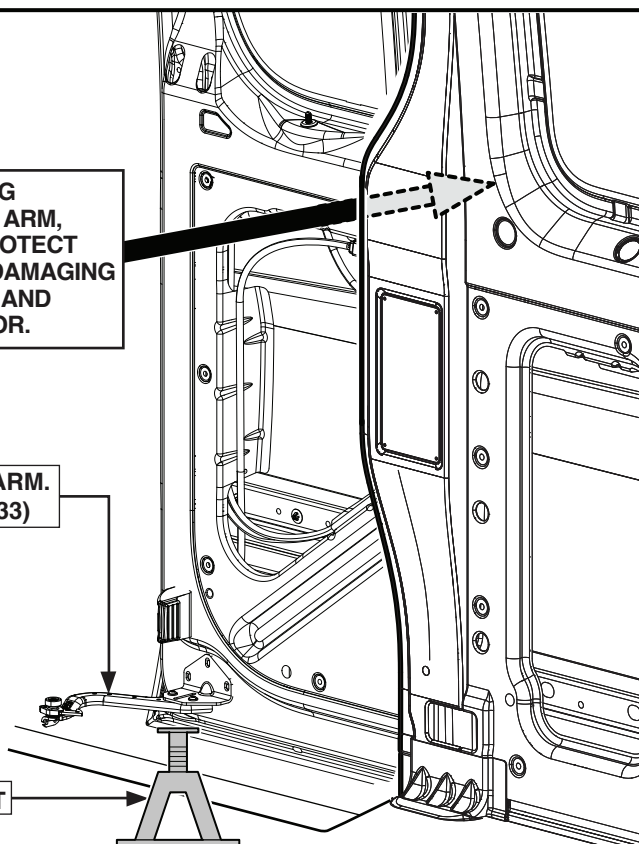


BEFORE REMOVING
THE LOWER DOOR ARM,
MAKE SURE TO PROTECT
THE DOOR FROM DAMAGING
THE VEHICLE SIDE AND
SUPPORT THE DOOR.

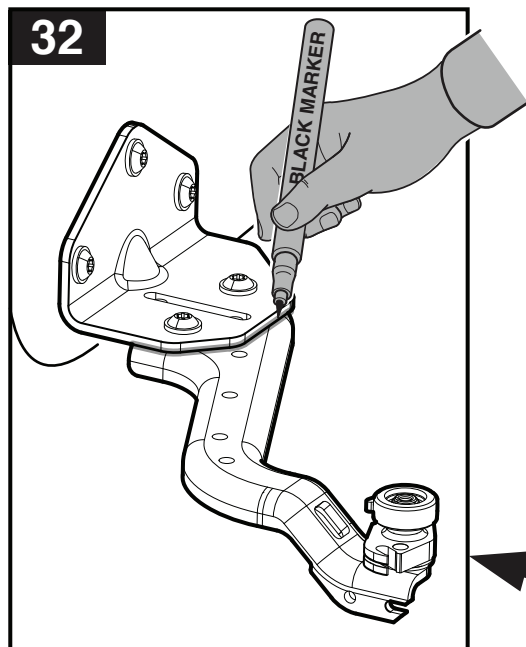
DISMANTLE THE ARM.
SEE (FIG. 32 AND 33)



DOOR SUPPORT



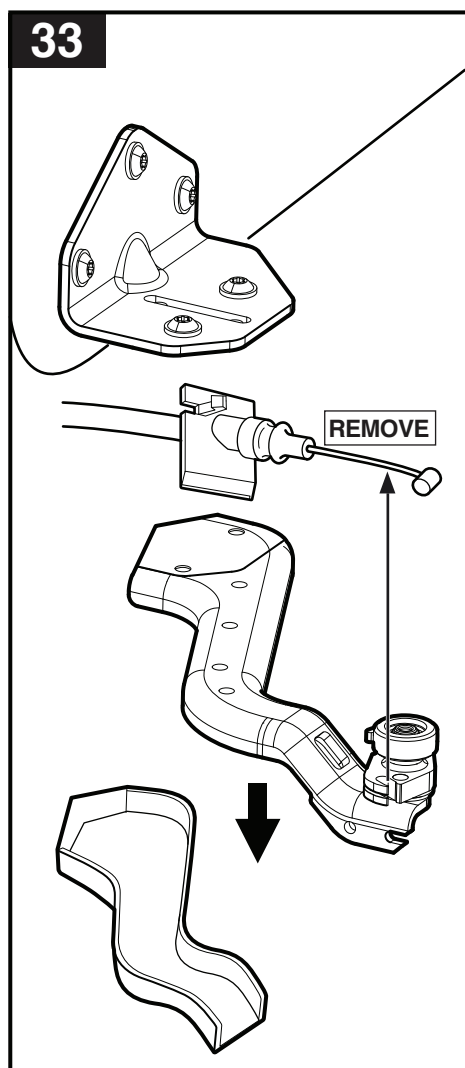
32



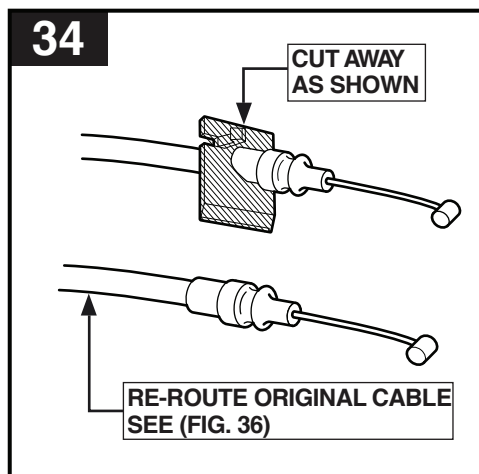
1. MARK LOWER ARM.
2. PROTECT THE DOOR FROM DAMAGING THE VEHICLE SIDE. (FIG. 33)
3. SUPPORT THE DOOR IN ORDER TO PREVENT THE DOOR FROM FALLING. (FIG. 33)
4. DISCONNECT THE LOWER DOOR ARM.(2 BOLTS)
5. DISCONNECT THE LOWER CABLE.
6. CUT THE ORIGINAL LOWER CABLE (AS SHOWN ON FIG. 34).
7. REINSTALL ALL PARTS BACK ACCORDING TO THE MARK.
*THE ORIGINAL CABLE SHOULD BE CONNECTED TO THE LEVER ON THE ACTUATOR ASSY. (SEE FIG. 36)

**REINSTALL ALL
PARTS BACK**

33

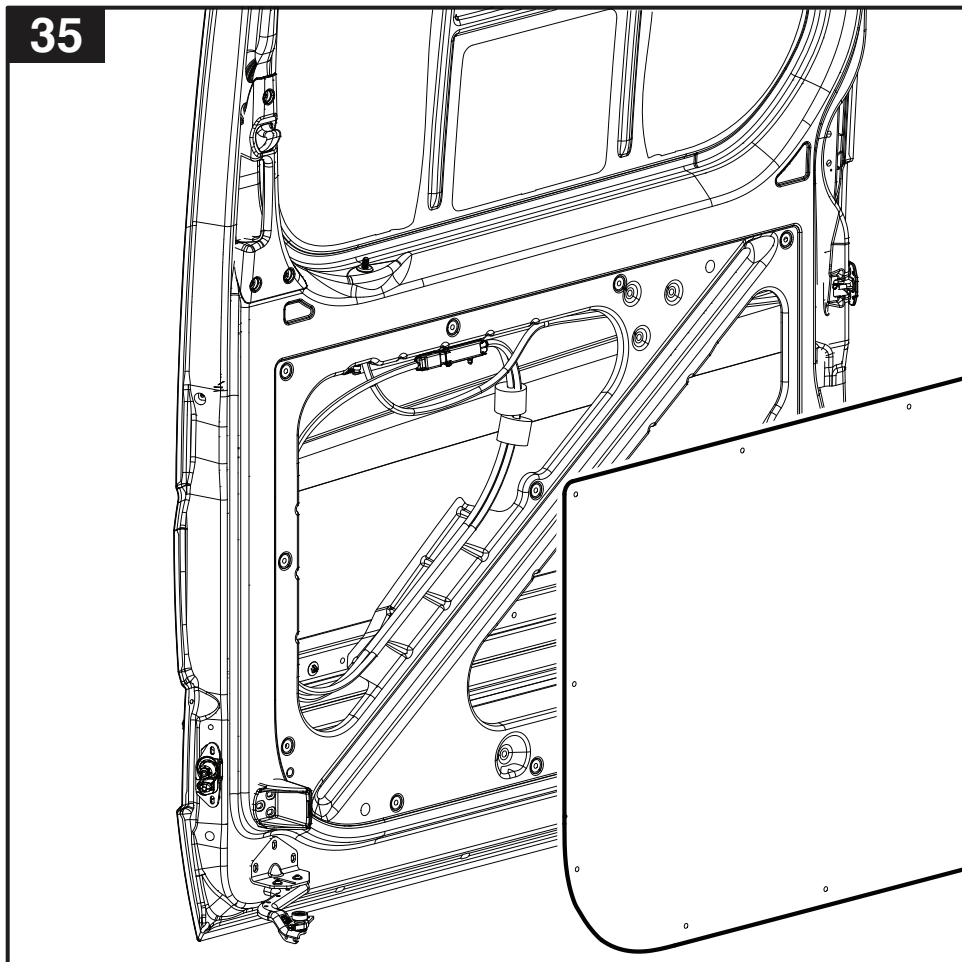


34





35



**REMOVE COVER PANEL.
REINSTALL AFTER
INSTALLING
THE ACTUATOR ASSEMBLY**

36

1. DISCONNECT ORIGINAL CABLE FROM INSIDE DOOR HANDLE.
2. RE-ROUTE ORIGINAL CABLE TO LOWER ACTUATOR ASSY. ②
3. CONNECT NEW CABLE (P.N. 2032-251) TO INSIDE DOOR HANDLE AND UPPER ACTUATOR ASSY. ③

NEW CABLE
P.N. 2032-251

WIRE TO CONTACT

MOTOR
P.N. 5110-2182

ACTUATOR ASSY.
P.N. 2032-2761

FASTEN UNIT AS SHOWN USING
5 SCREWS 5x19
(SELFDILLING)

RE-ROUTE ORIGINAL
CABLE FROM LOWER
DOOR ARM.

ORIGINAL CABLE

RE-ROUTE
ORIGINAL CABLE

**MICROSWITCH SHOULD NOT BE
PRESSED WHEN DOOR HANDLES
ARE NOT BEING PULLED**

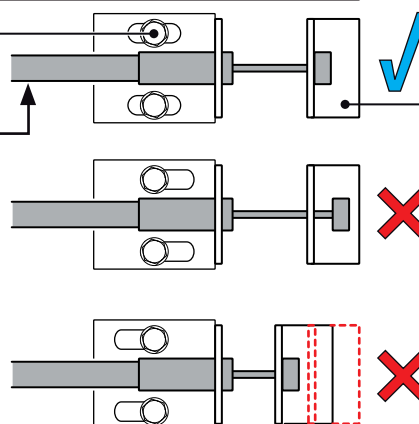
ADJUSTING
BOLTS

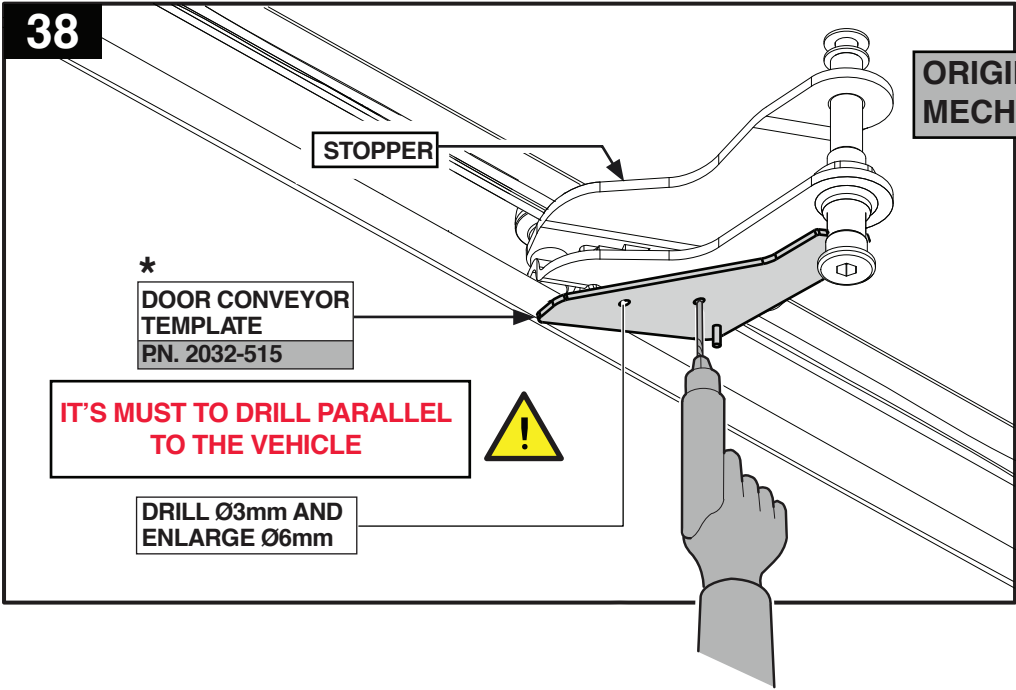
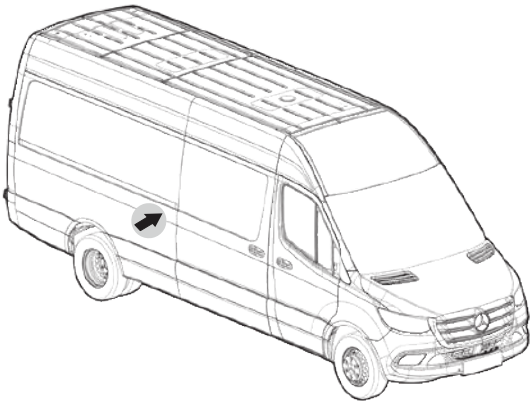
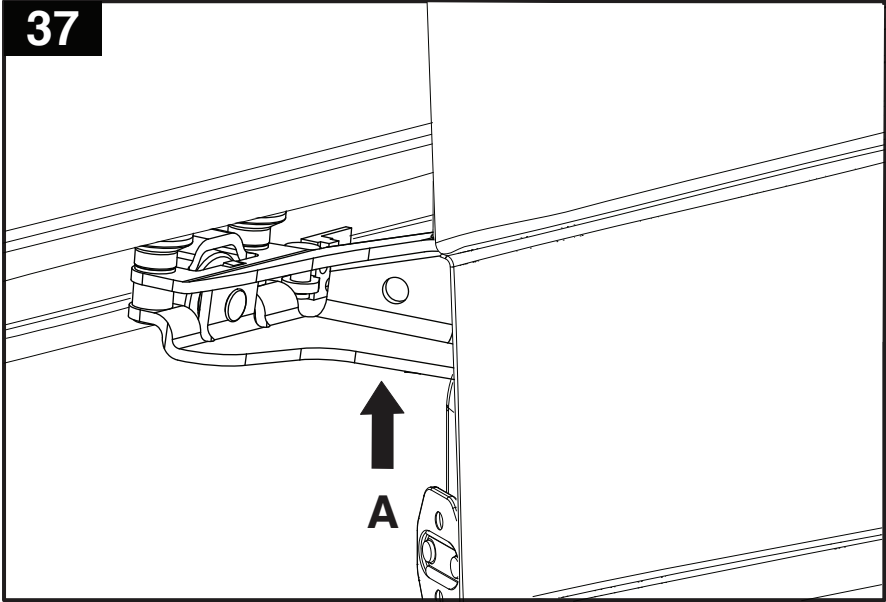
CABLE

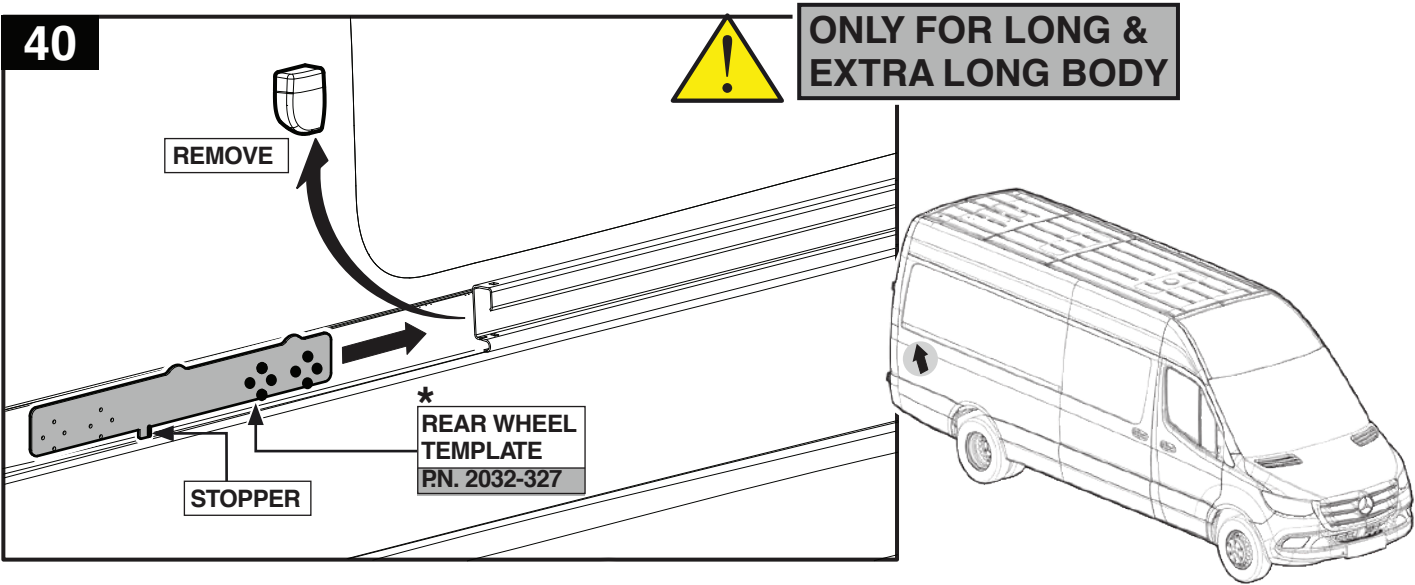
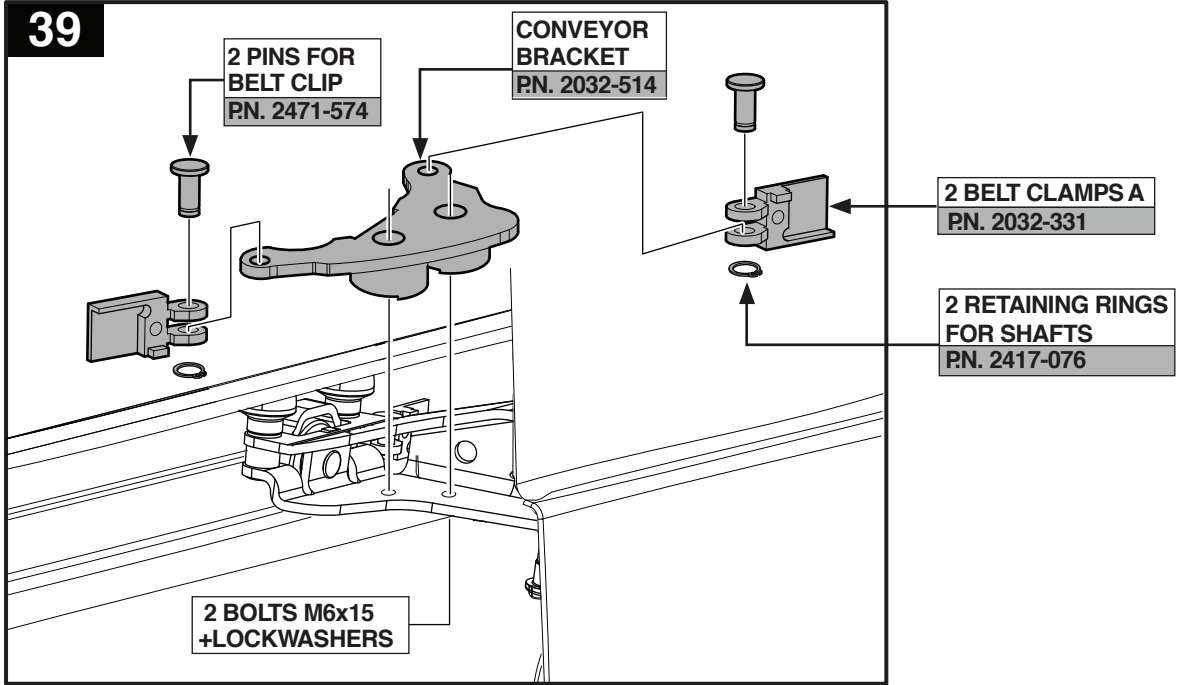
LEVER FOR
MICROSWITCH

CABLE ADJUSTMENT ②, ③, ④

RELEASE 2 BOLTS AND ADJUST
THE CABLE ACCORDING
THE DRAWINGS



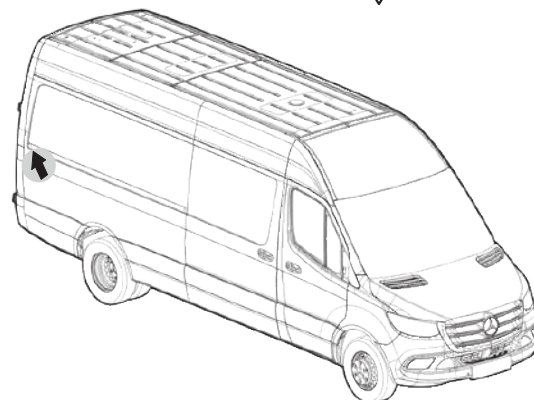
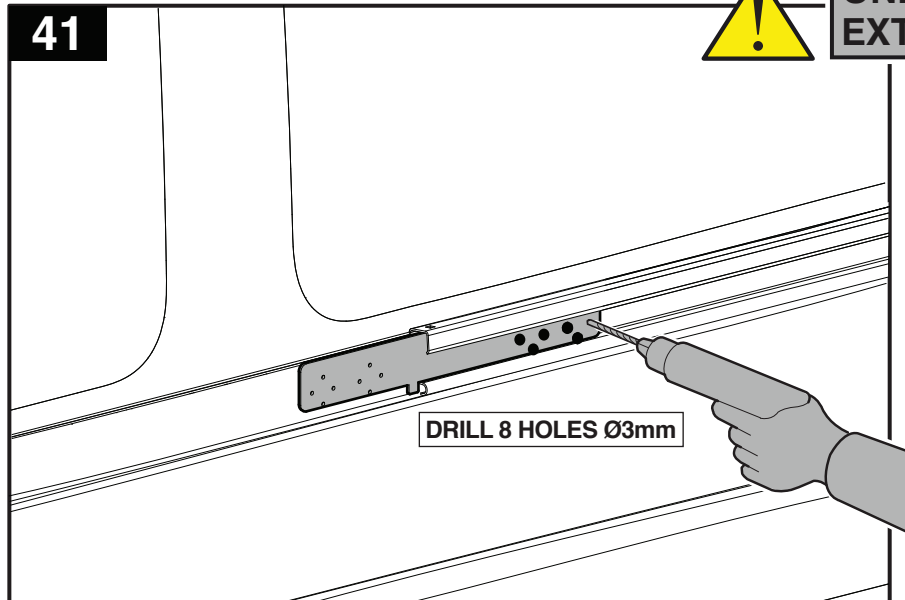




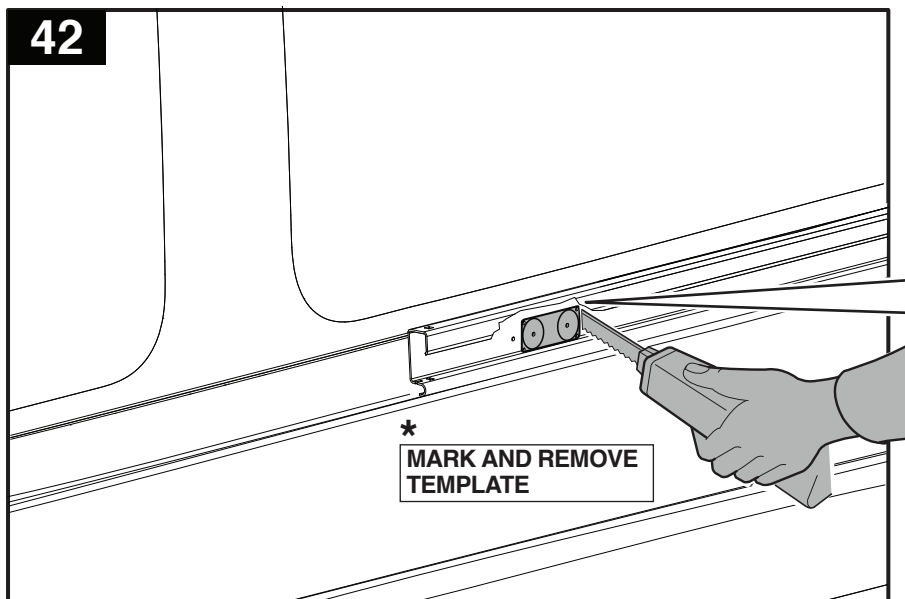
41



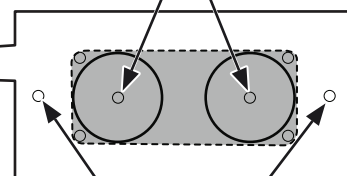
ONLY FOR LONG & EXTRA LONG BODY



42

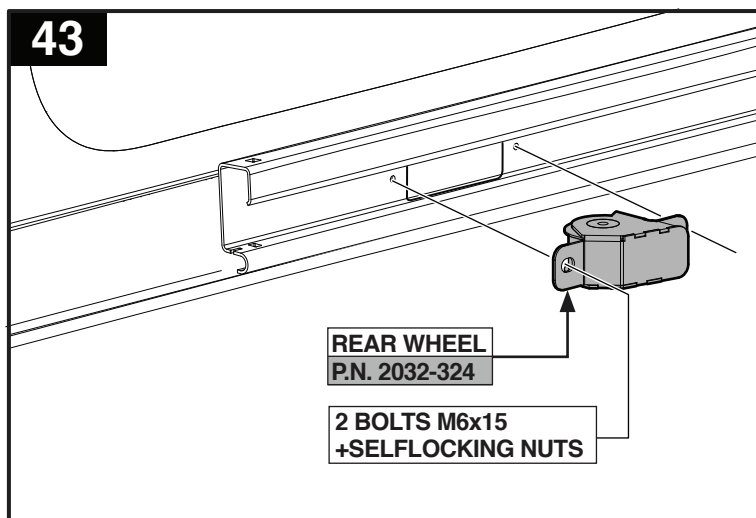


ENLARGE 2 HOLES TO Ø27mm AND CUT ACCORDING THE MARK

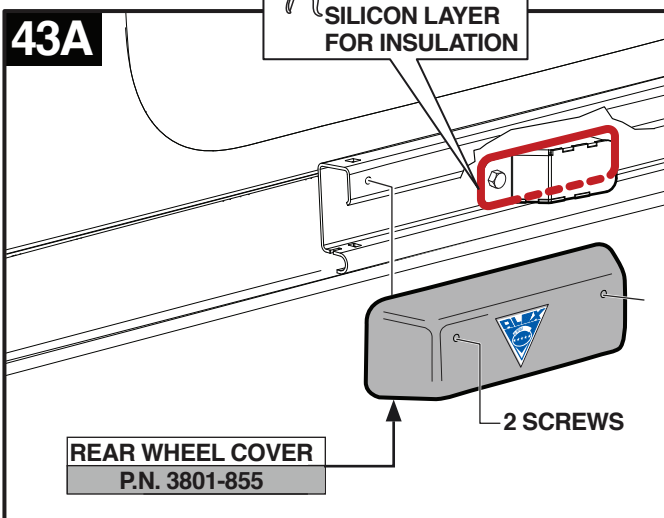


ENLARGE 2 HOLES TO Ø6mm

43



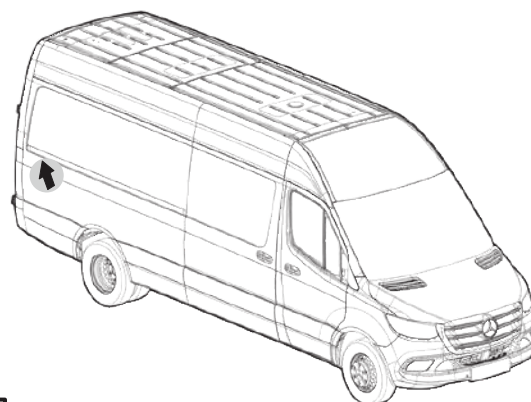
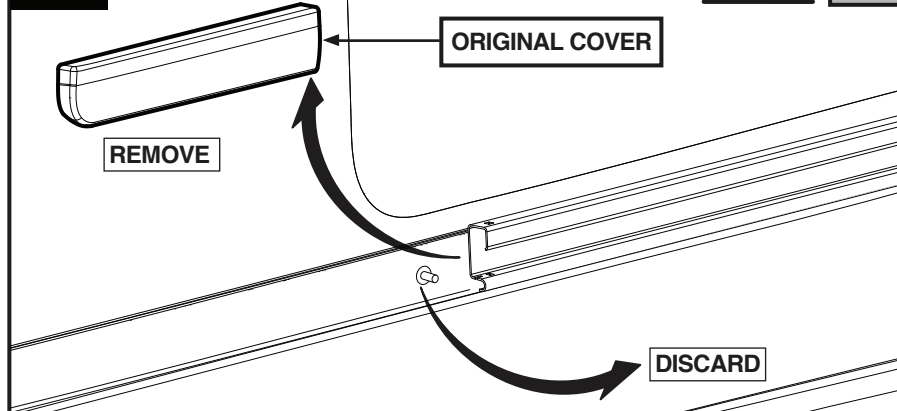
43A



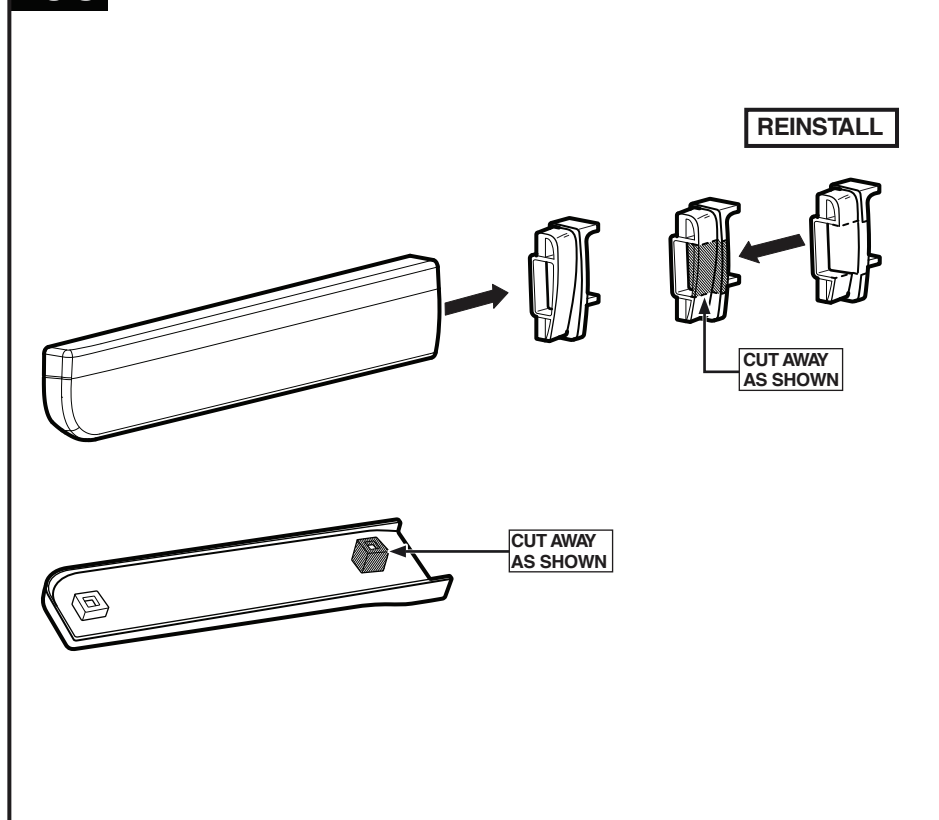


**ONLY FOR
SHORT BODY**

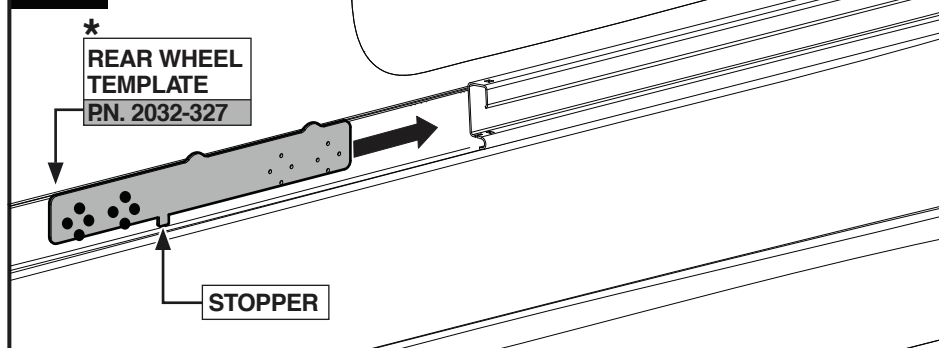
43B



43C

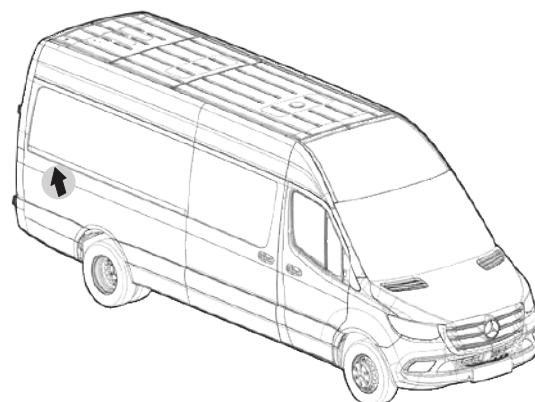
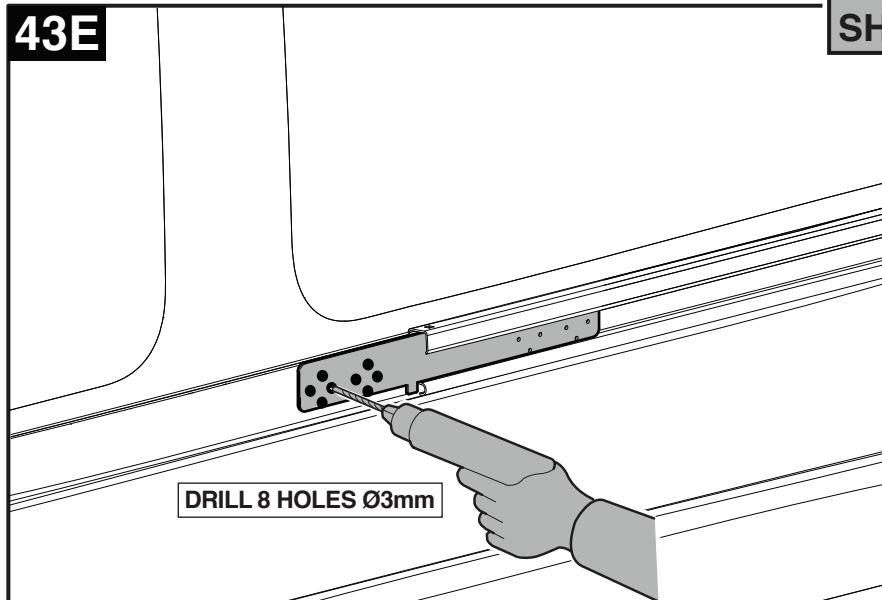


43D

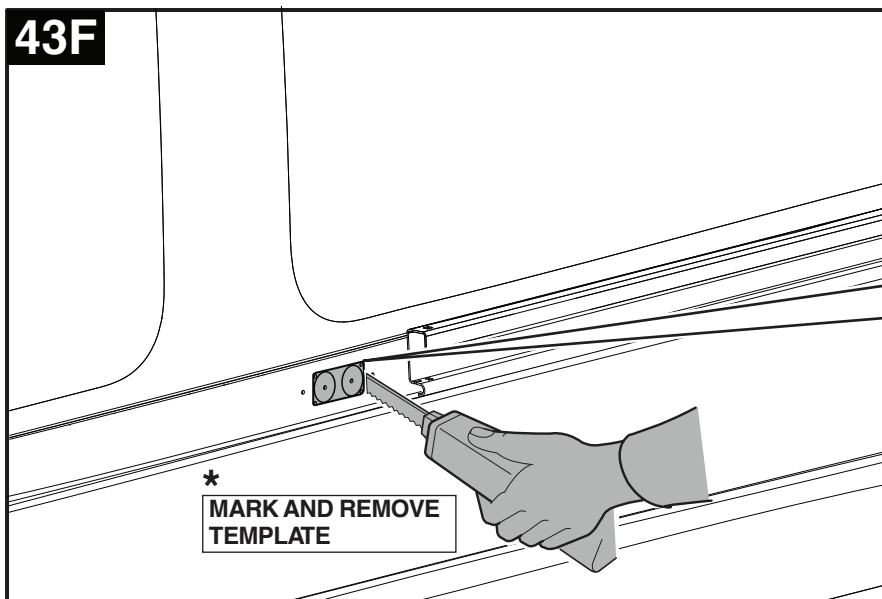


**ONLY FOR
 SHORT BODY**

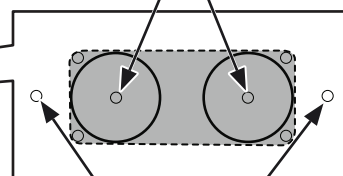
43E



43F

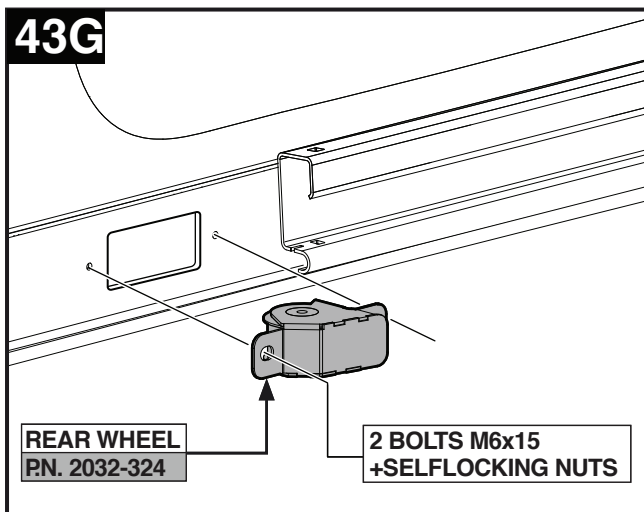


**ENLARGE 2 HOLES
 TO Ø27mm AND CUT
 ACCORDING THE MARK**

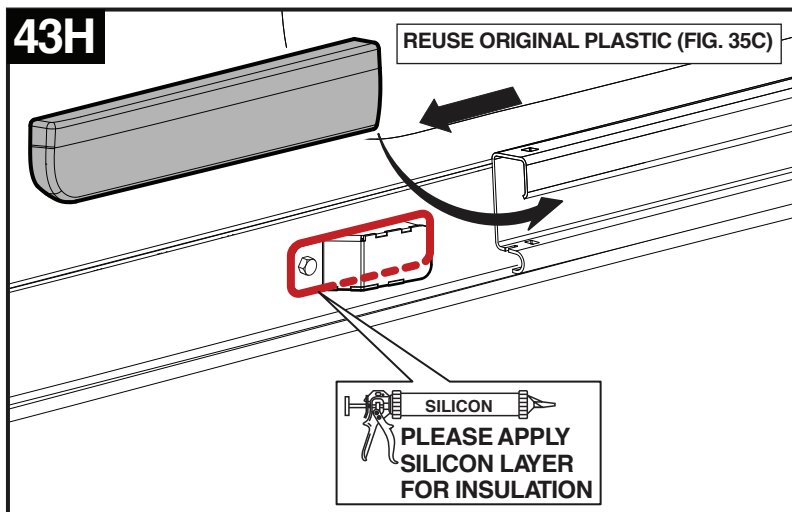


**ENLARGE
 2 HOLES TO Ø6mm**

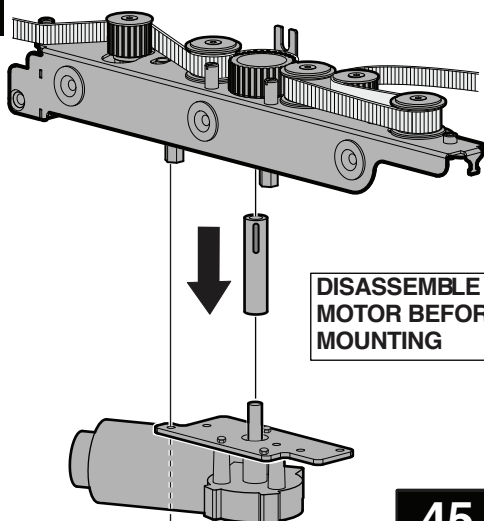
43G



43H

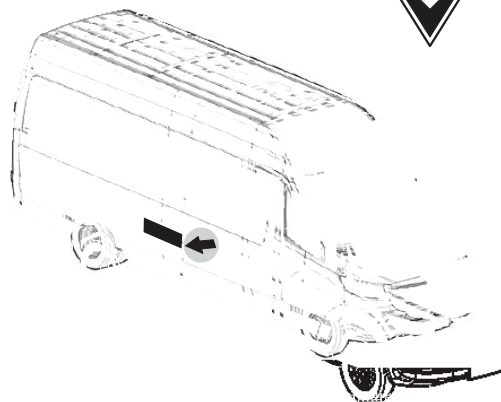


44

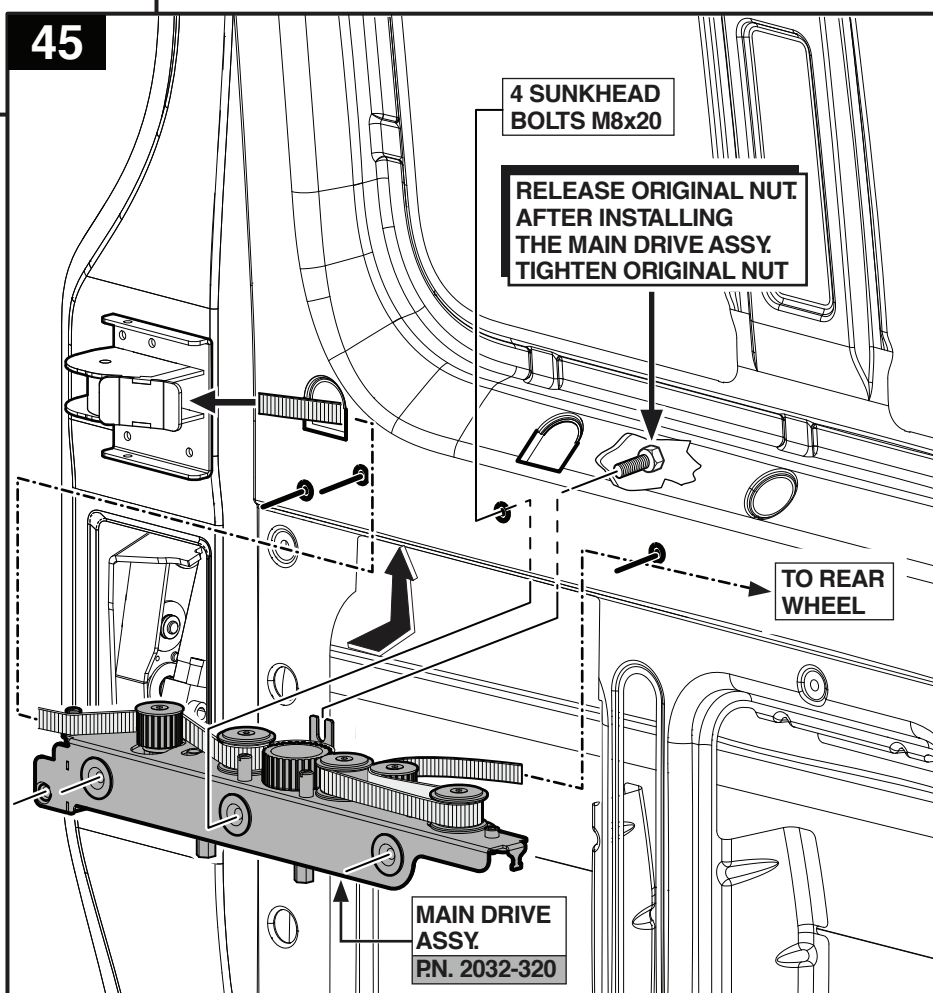


**DISASSEMBLE
MOTOR BEFORE
MOUNTING**

**3 SELFLOCKING
NUTS M6**



45



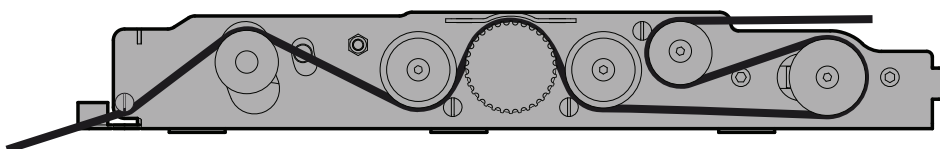
**4 SUNKHEAD
BOLTS M8x20**

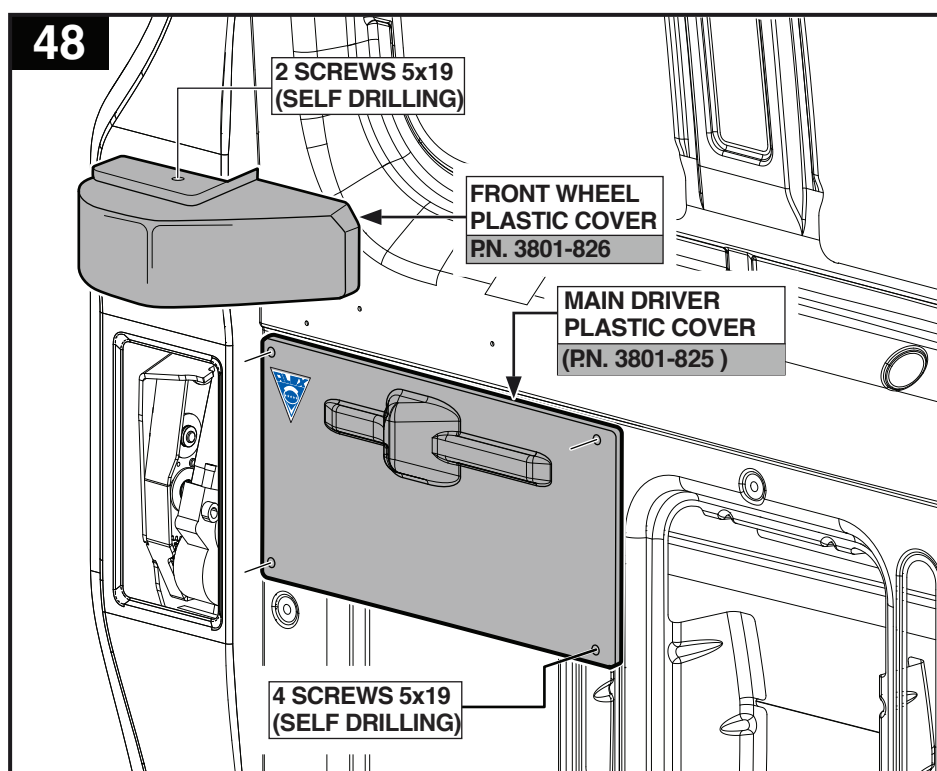
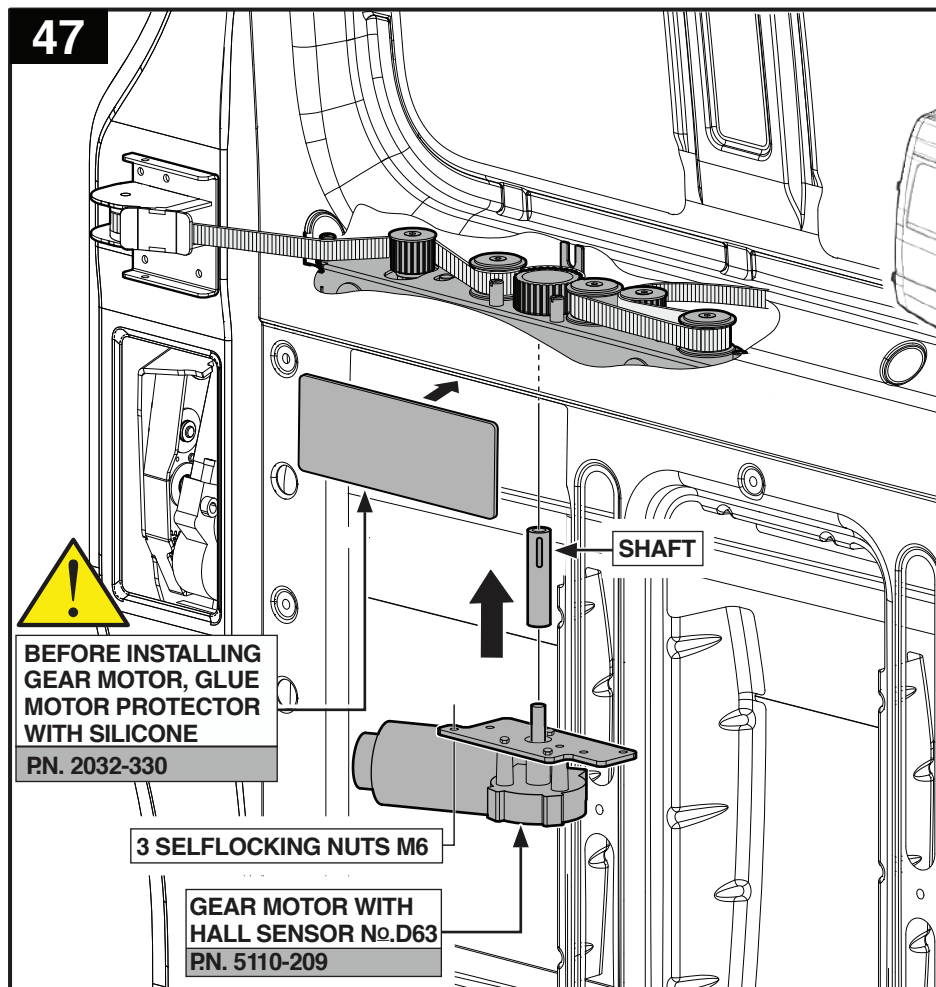
**RELEASE ORIGINAL NUT.
AFTER INSTALLING
THE MAIN DRIVE ASSY.
TIGHTEN ORIGINAL NUT**

**TO REAR
WHEEL**

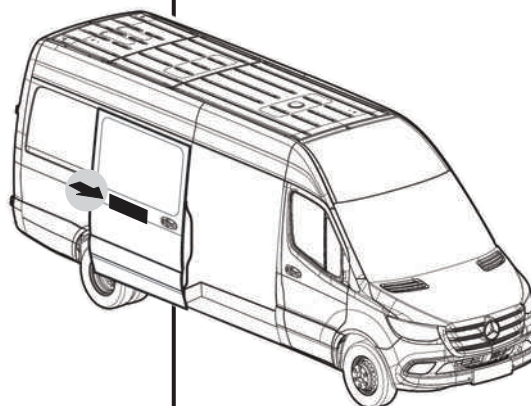
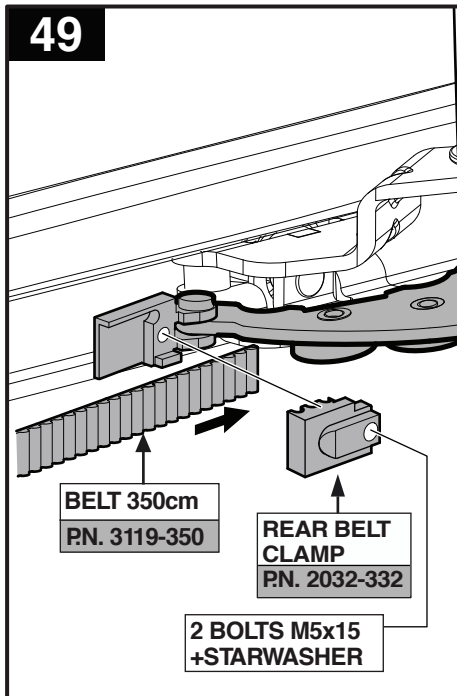
**MAIN DRIVE
ASSY.
PN. 2032-320**

46

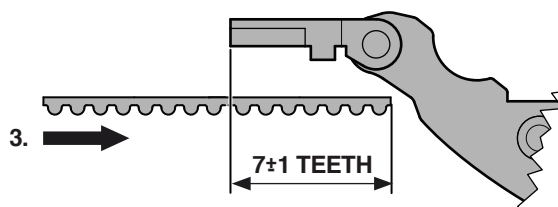




49



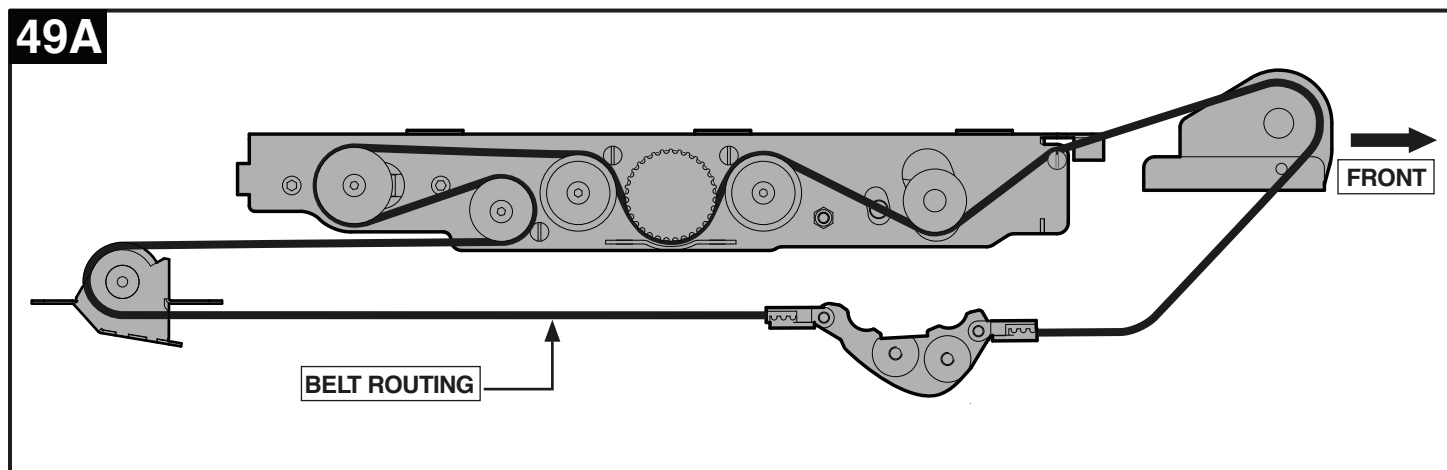
BELT LENGTH ADJUSTMENT



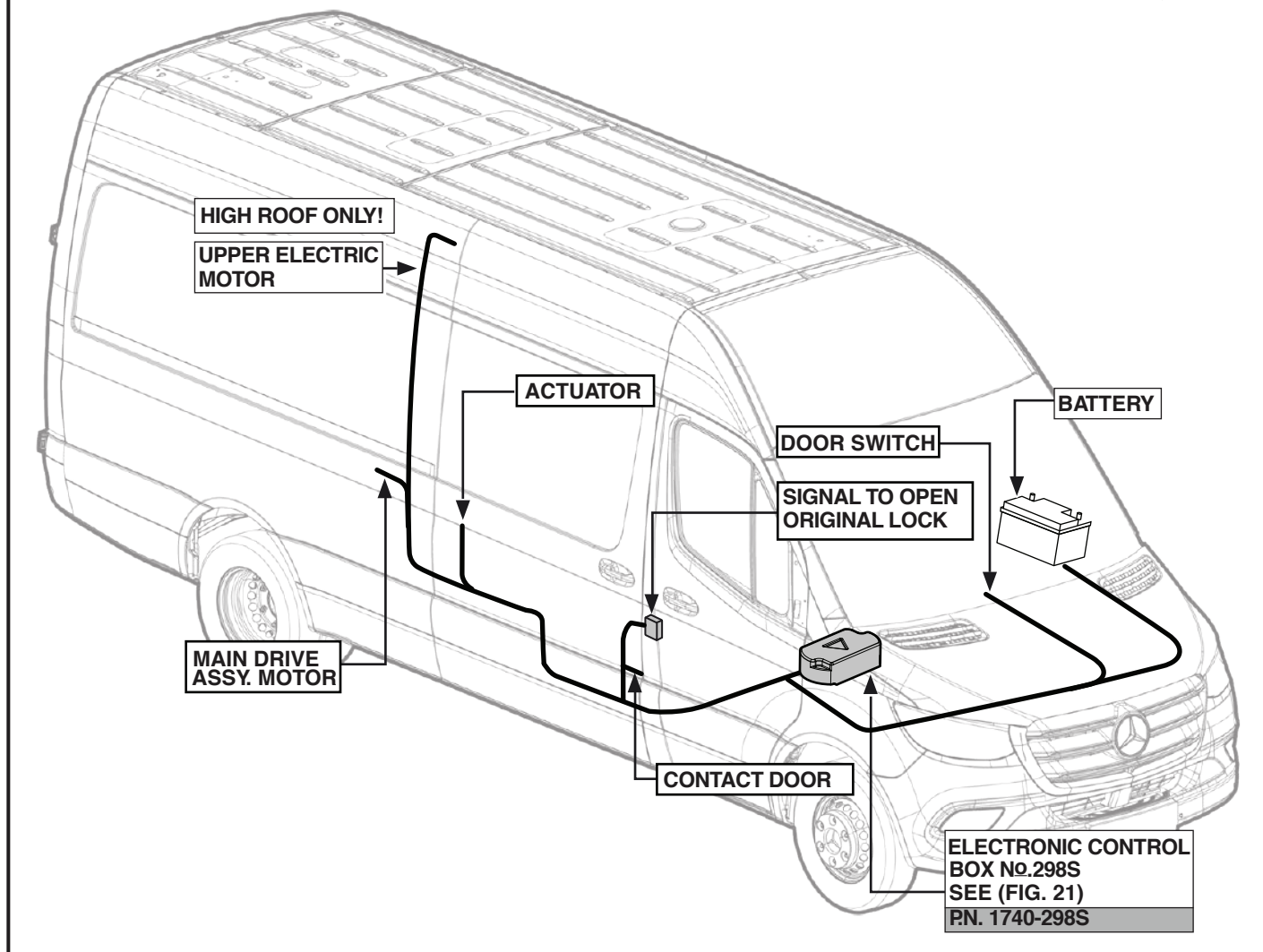
1. CLOSE THE DOOR.
2. RELEASE BELT FROM REAR BELT CLAMP
3. STRETCH THE BELT AND CUT ACCORDING THE DRAWING, LEAVING 8 TEETH.

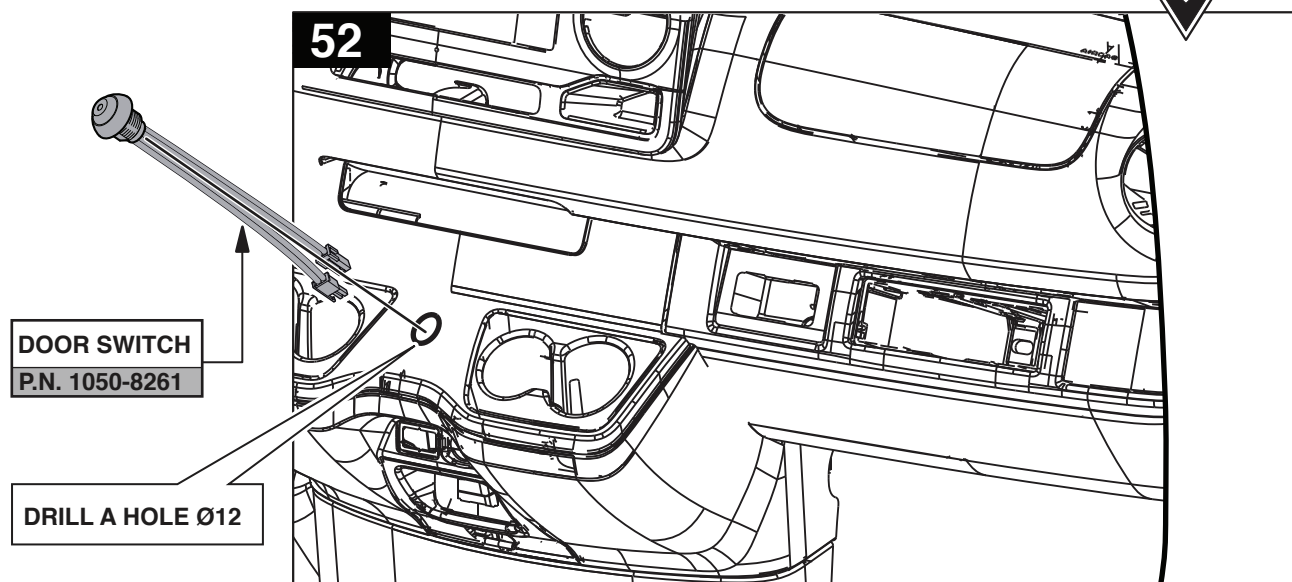


49A



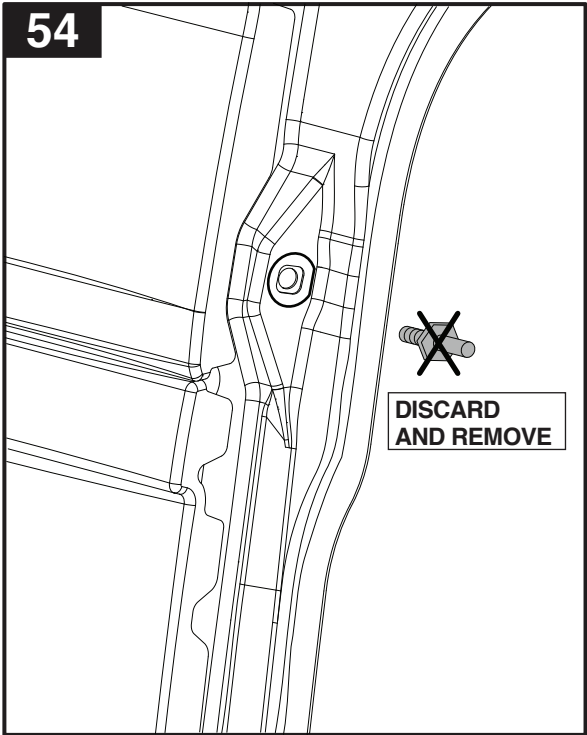
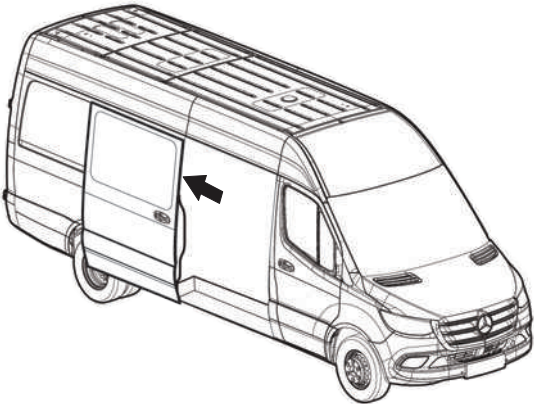
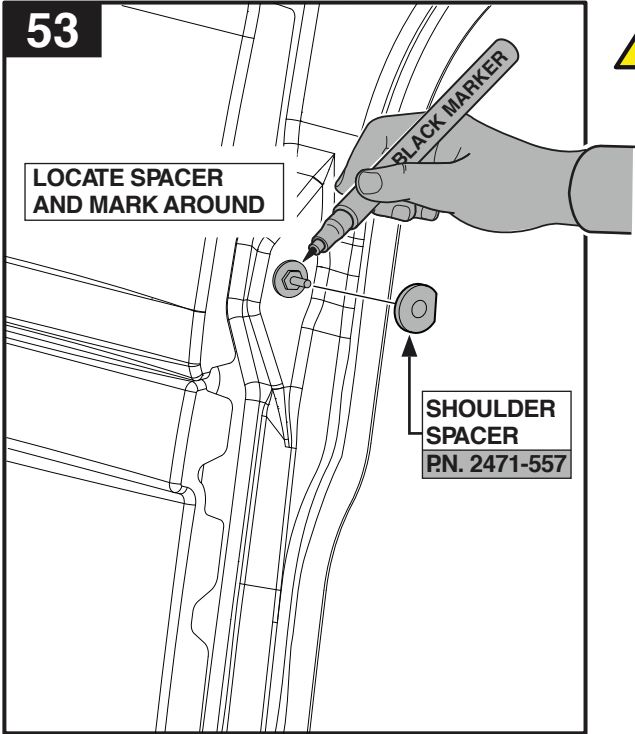
50





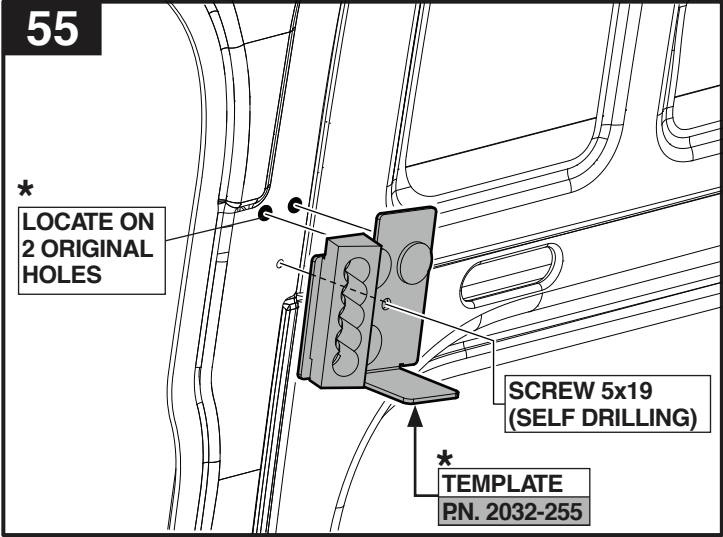


FOR HIGH ROOF ONLY

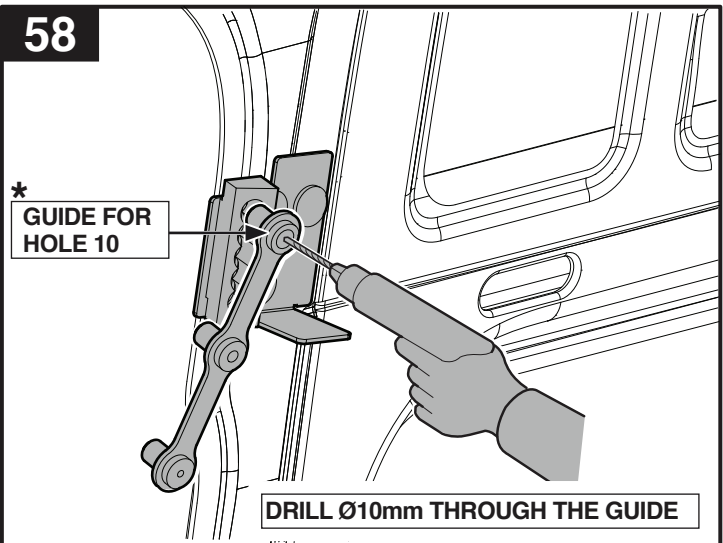
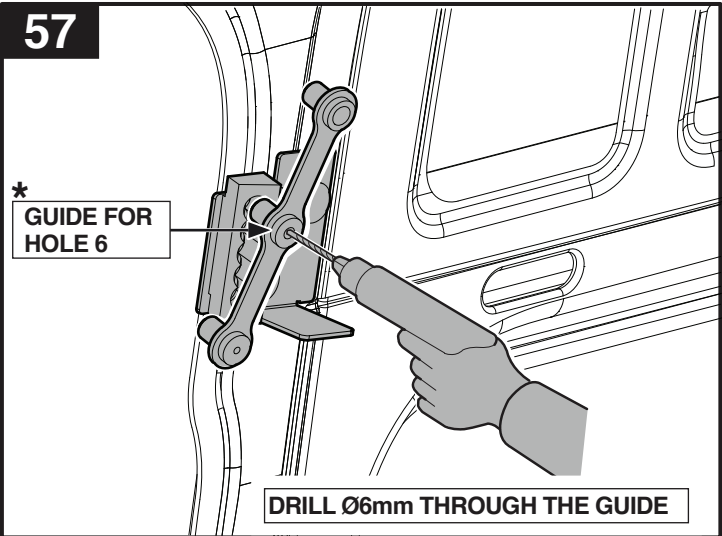
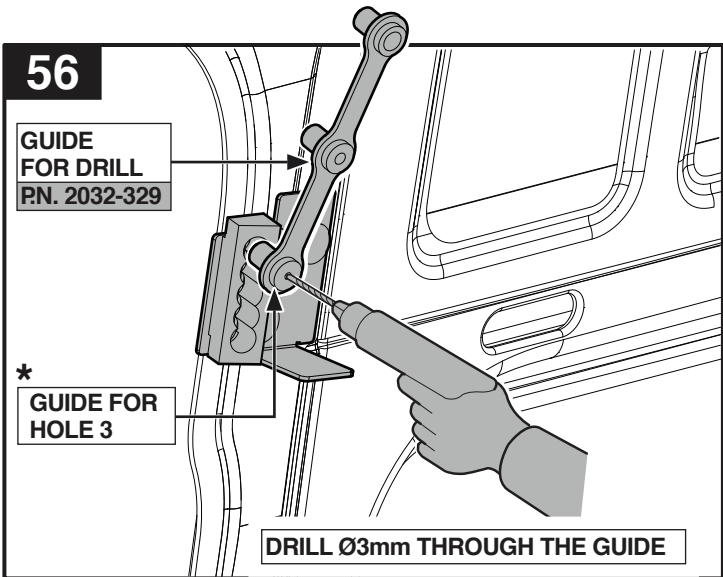
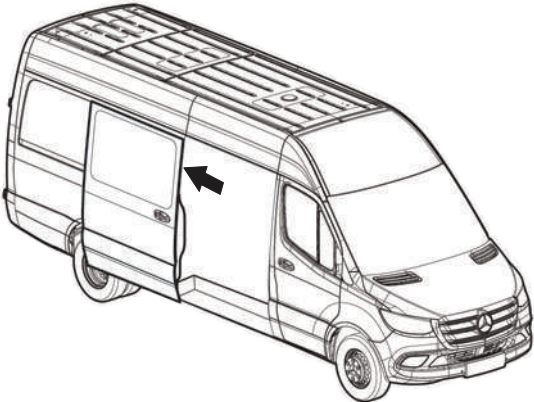




55

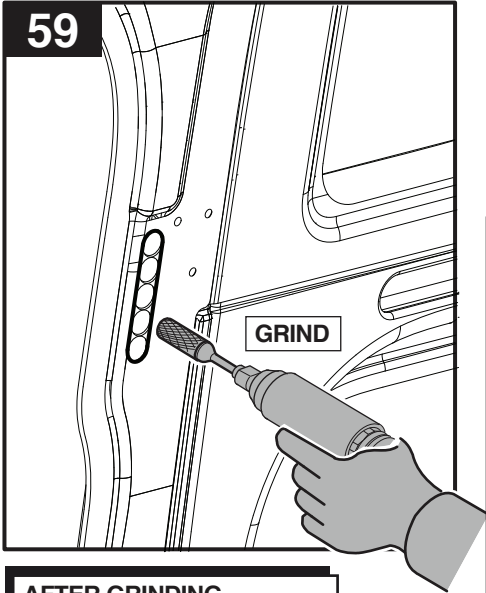


FOR HIGH ROOF ONLY

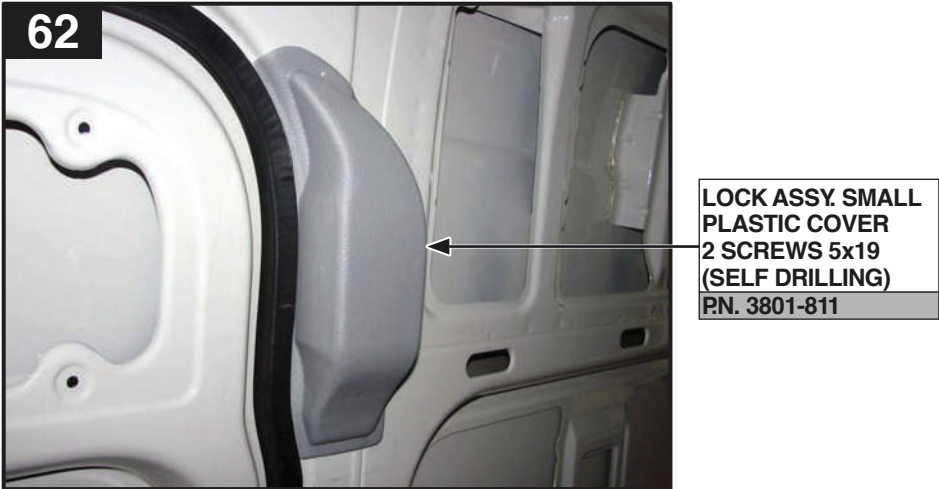
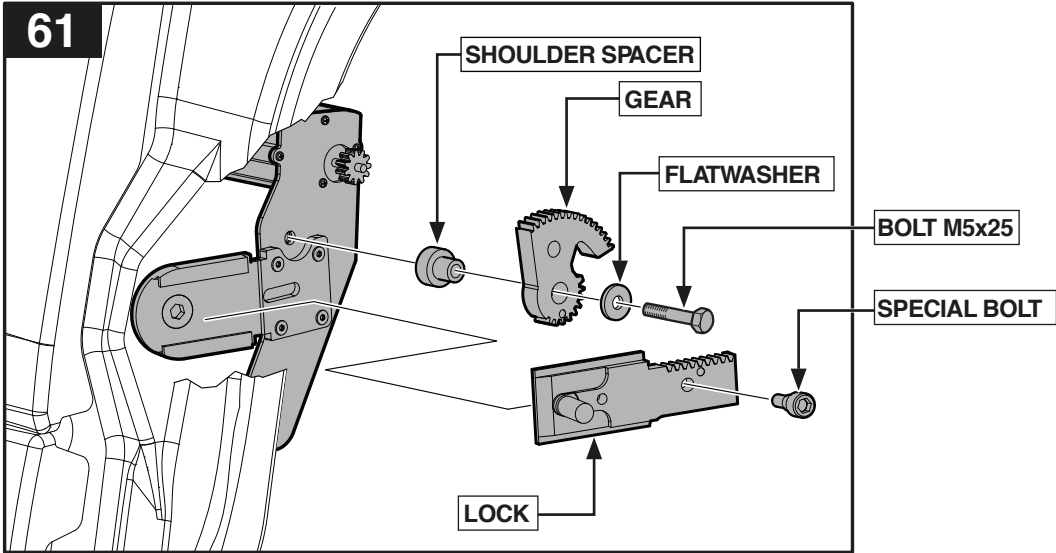
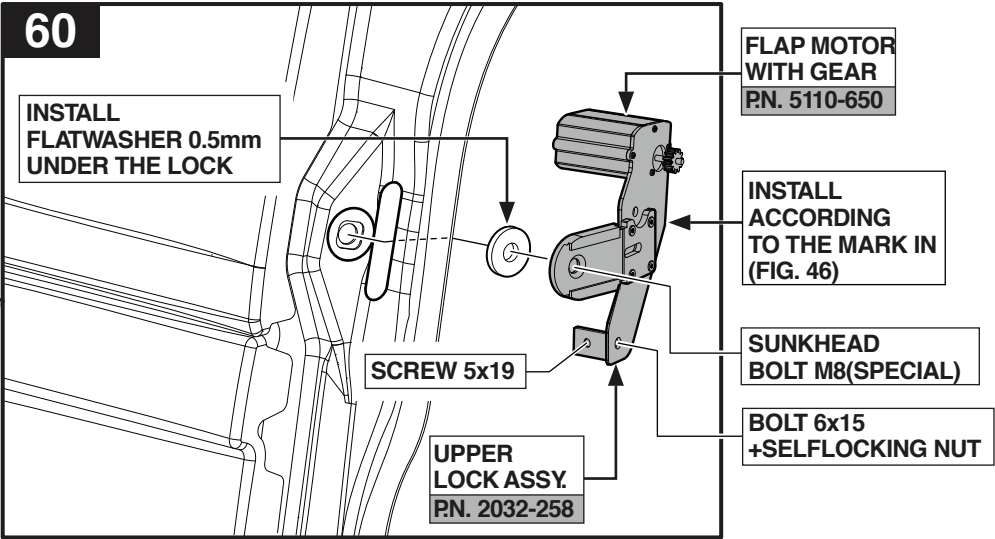


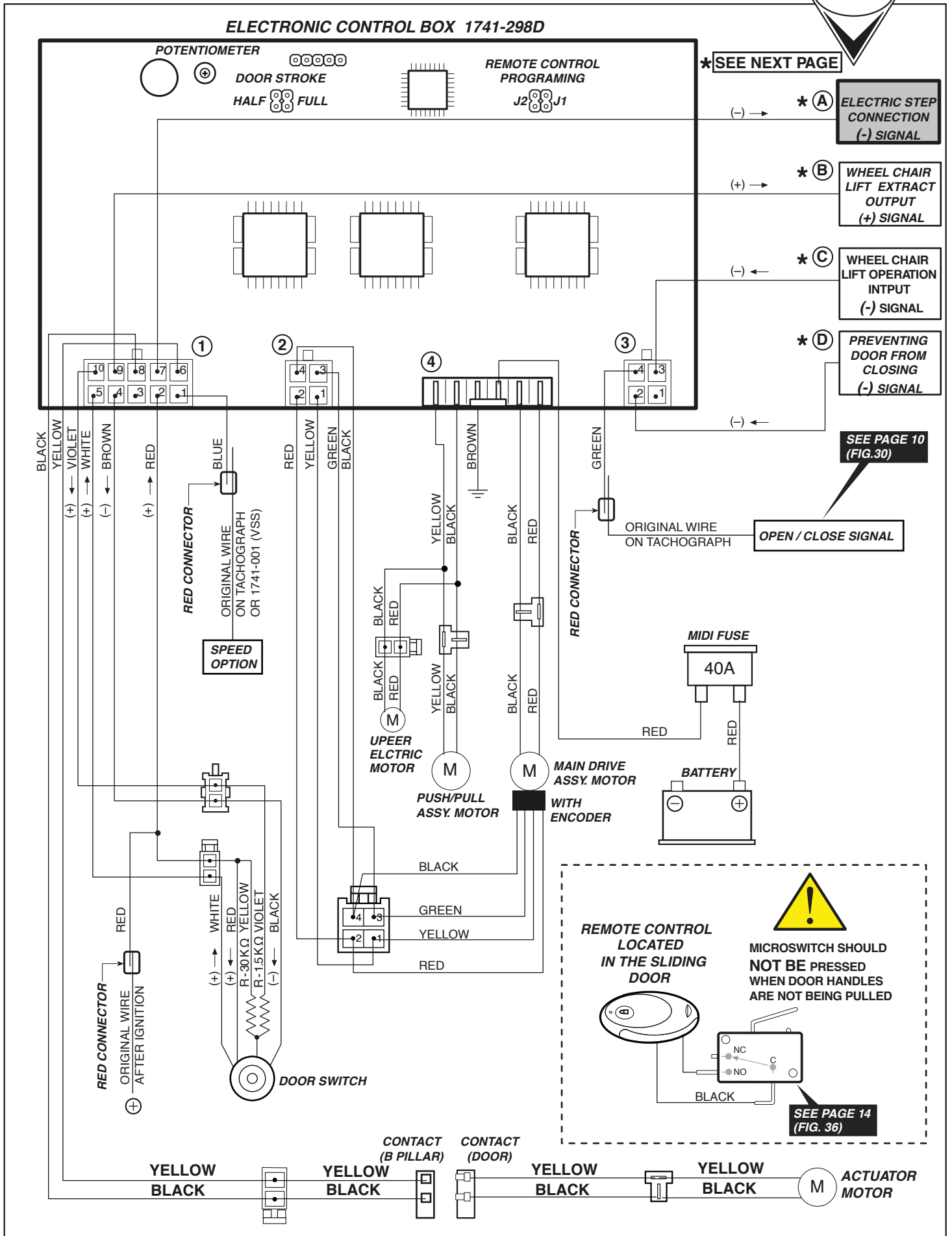


FOR HIGH ROOF ONLY



AFTER GRINDING
AS MARKED
COVER WITH PAINT
TO PREVENT CORROSION







ALEX ORIGINAL ELECTRONIC CONTROL BOX

ELECTRICAL CONNECTIONS (OPTION)

A. Electric step connection output (-) signal

Output (-) signal for operating an ALEX ORIGINAL electric step, pin 7 at the white 10 pin connector (plug 1) to be connected to step Electronic Control Box part No 1740-2953.

B. Wheel chair lift extract output (+) signal

When the door is in full opening position, output (+) signal to wheel chair lift operation, is on pin 9 at the white 10 pin connector plug.

C. Wheel chair lift insert door operation input(+) signal

First input (+) signal pin 3 at plug 3 will open the door.

Second input (+) will close the door when wheel chair lift is on close position.

D. Preventing door from closing (-) signal

As long as there is input (-) on pin 2 at the white 4 pin connector (plug 3) door will not close.

BEEPING SOUNDS

Learning Mode:

Fragmented beeping will be heard when door is at its first learning cycle.

Opening Mode:

Fragmented beeping will be heard when door is opening.

Closing Mode:

Fragmented beeping will be heard when door is closing.

Obstacle Detection On Closing Mode:

Continuous beeping will be heard.

If the sliding door is obstructed during the closing procedure, it opens fully again (for 2 attempts).

On third attempt the electric sliding door moves with increased force.

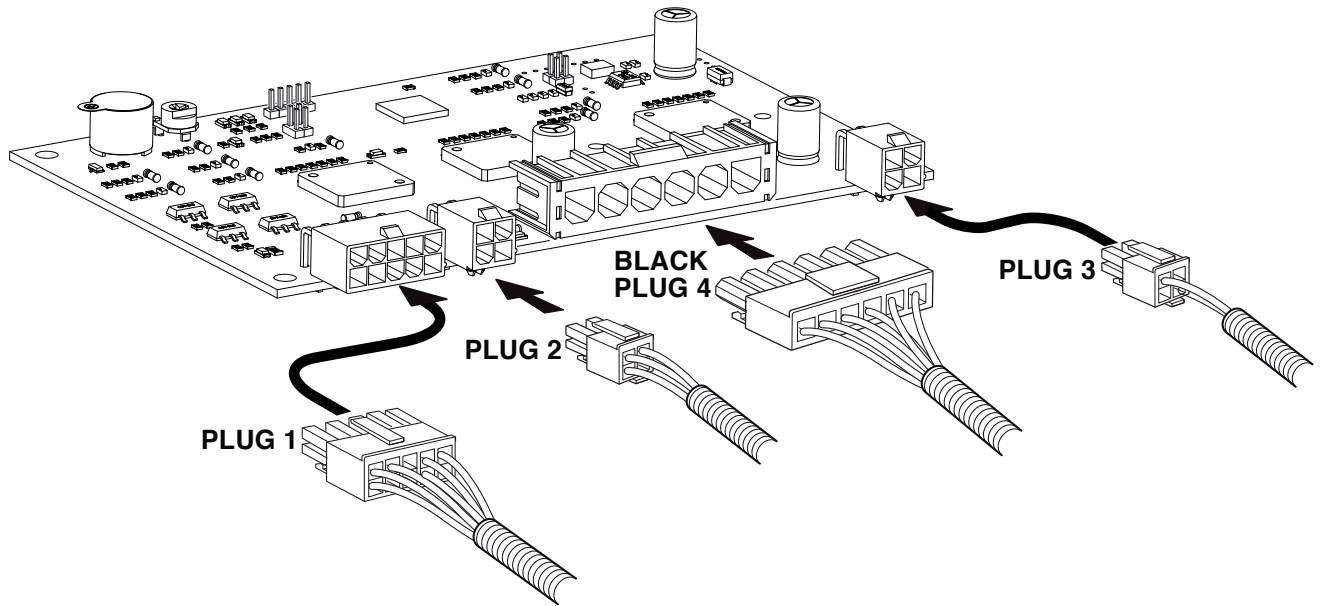


ALEX ORIGINAL ELECTRONIC CONTROL BOX

Basic Programming Close / Open Cycle-Once installation completed,

Make sure ignition is **OFF** and the door is **OPEN**, insert all plugs into the Electronic Control Box while leaving the Black plug No 4 for last.

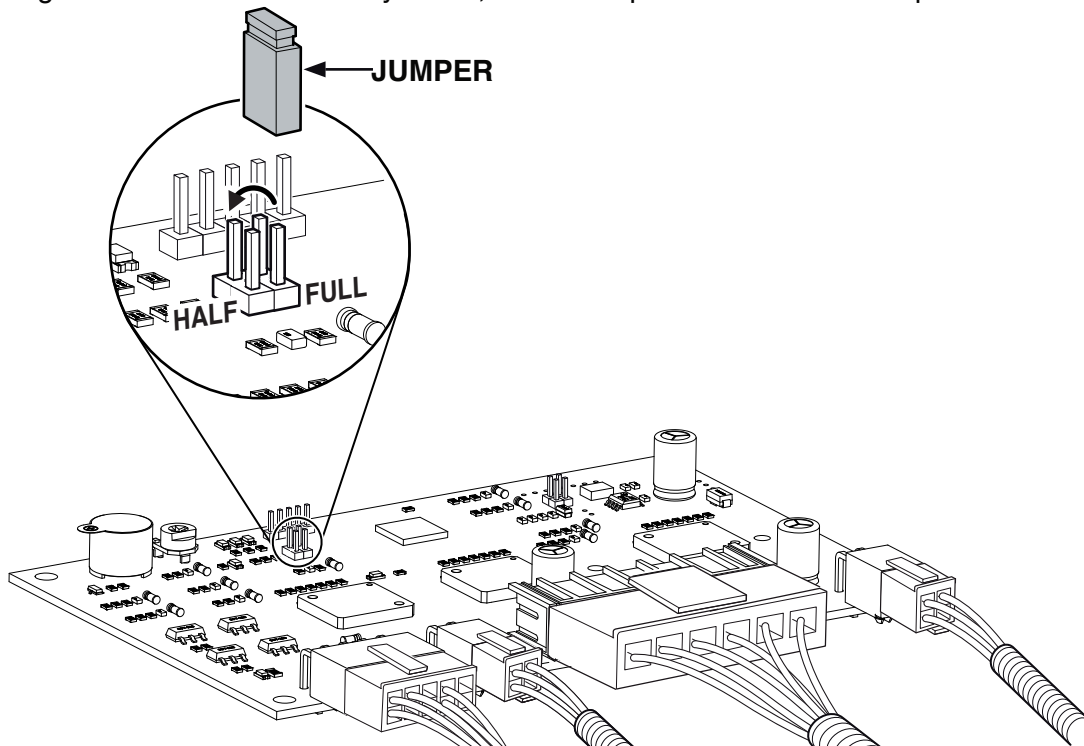
Once Black plug is connected, door will perform a slow movement close and open cycle and should not be interfered with.



Programming Door Position at half way,

This is handy when door needs to open half way only, when a seat is located near it, for example. As default, the module is supplied with the jumper inserted into **FULL** position.

For positioning the door in the **HALF** way mode, move Jumper into socket **HALF** position.





ALEX ORIGINAL ELECTRONIC CONTROL BOX

Reprogramming sliding door Electronic Control Box:

(In case of belt replacement)

1. Turn off ignition key.
2. Disconnect the black connector.
3. Reconnect the black connector.
4. Turn on ignition key.
5. Press and hold driver switch for 10 seconds Within time window of 30 seconds.
6. The door will operate by itself – when the door stops in open position, it is ready for use.

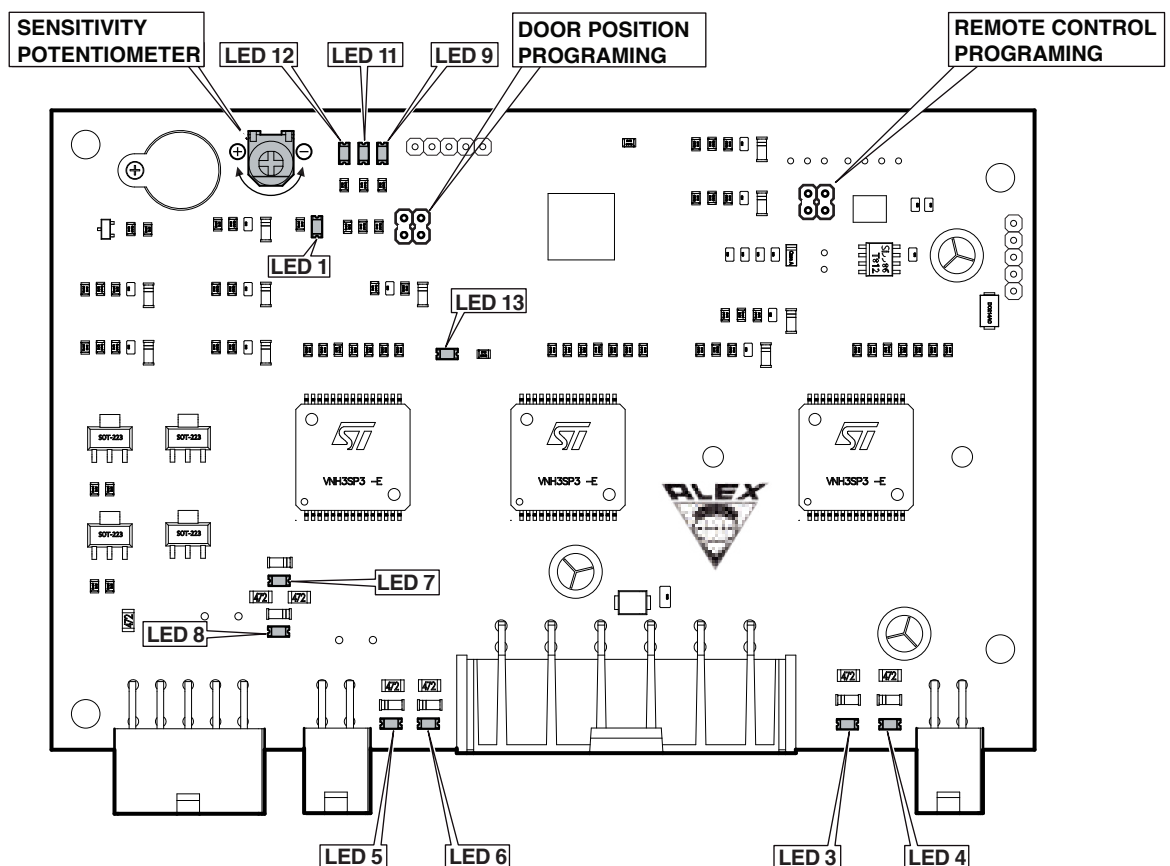
PCB leds color and number for all functions.

LED1 (White) – Remote Control-1	LED8 (Red) – Actuator Closing
LED3 (White) – Motor A Opening	LED9 (Red) – Door Opened Led
LED4 (Red) – Motor A Closing	LED11 (Yellow) – Ignition
LED5 (White) – Motor B Opening	LED12 (Blue) – Driver Command
LED6 (Red) – Motor B Closing	LED13 (Blue) – Remote Control-2
LED7 (White) – Actuator Opening	

Potentiometer adjustment for intensity level of stopping door while closing

To reduce sensitivity of Electric Door turn the Potentiometer clockwise (-).
To Increase sensitivity turn the Potentiometer counter clockwise (+).

*Adjustment will take affect after turning ignition key off and on.





ALEX ORIGINAL ELECTRONIC CONTROL BOX

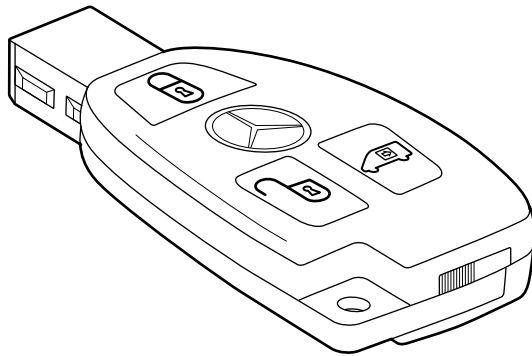
Mercedes Sprinter

Remote Control operation instruction:

Pressing Twice on  button will open the Sliding door.

Pressing Once on  again while the door is on the move will stop the Sliding door.


Pressing Once on  button will close the Sliding door.



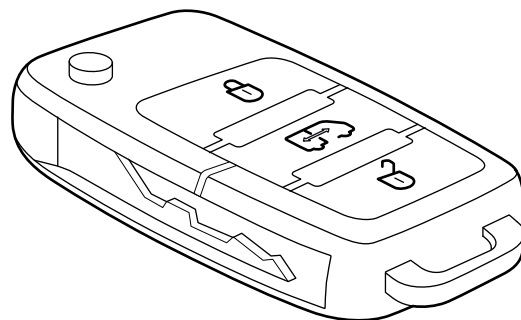
Volkswagen Crafter

Remote Control operation instruction:

Pressing Twice on  button will open the Sliding door.

Pressing Once on  again while the door is on the move will stop the Sliding door.

Pressing Once on  button will close the Sliding door.





ALEX ORIGINAL TROUBLESHOOTING

OPENING MODE

1. Door opens half way

- Verify jumper on electronic control box is in "full" position. If not, insert it.
- Check for an obstacle or person blocking the door, check for dirt in the belt track.
- Reprogram door electronic control box.

2. Door starts to open and stops

- Check drive belt length and adjust it according to installation manual.
- Check the cable connecting actuator to original door lock.
- Micro switch installed in the door should not be pressed when the door handle isn't pulled.
- Check door is released from lock. If not, check contacts, release the lock.
- Check for an obstacle or person blocking the door, check for dirt in the belt track.
- Reprogram door electronic control box.

3. Door is not moving at constant speed

- Verify that the encoder cable (located on the electric motor side) is properly connected and not damaged. Repair if required.
- Close the door and check if problem is solved. If not, reprogram door electronic control box.
- Check drive belt length and adjust it according to installation manual.

4. Door stays locked

- Check the actuator assembly and motor.
- Check and adjust the actuator assembly cables for opening.
- Check contacts on door and on B pillar.
- Verify that children's lock is unlocked. If not set children's switch lock to unlock position.

5. While opening the door long beep sound.

Close the door and re open it. If the problem continues:

- Verify that the encoder cable is properly connected on both sides and not damaged.
- Reprogram door electronic control box.



ALEX ORIGINAL TROUBLESHOOTING

CLOSING MODE

1. Long beep sound While closing the door.

Open the door and re close it. If the problem continues:

- Verify that the encoder cable is properly connected on both sides and not damaged.
- Reprogram door electronic control box

2. In closing - the door opens by its self with a long beeping

- Check if there is an obstacle or person blocking the door, check for dirt in the belt track
- Check drive belt length and adjust it according to installation manual.

*** If problem continues, adjust the potentiometer as per installation manual
(turn the potentiometer clock-wise).

3. Door will close but not lock

- Check the main and upper latch operation and adjust if needed.
- Check contacts on door and on B pillar (clean).
- Check the cable connecting actuator to original door lock.

4. Door is not moving at constant speed

- Verify that the encoder cable is properly connected on both sides and not damaged. Repair as required.
- Close and open the door and check if problem is solved. If not, reprogram door electronic control box
- Check drive belt length and adjust it according to installation manual.


*** If problem continues, adjust the potentiometer as per installation manual
(turn the potentiometer clock-wise).



ALEX ORIGINAL TROUBLESHOOTING


REMOTE CONTROL AND BUTTONS

1. Remote control doesn't operate

 Remote control operates only when ignition key is off.


- Check remote control's batteries. Replace if needed.
- Verify that the remote is programmed To the electric control box and reprogram if needed.
- Check if central locking signal wire is connected to electronic control box pin 4 plug 3.
For vehicles with original remote control (as Sprinter / Crafter / Transit / Ducato, etc)

2. Door handle operation

 Door handle operates only when ignition key is on.

- Micro switch installed in door should not be pressed when the door handle isn't pulled.
- Check micro switch remote control's batteries, replace if needed
- Reprogram door handle remote control to electronic control box.

3. Dash button doesn't operate

 Driver button operates only when ignition key is on.

- Check connections after ignition.
- Check if the Blue LED in the driver button is on when the door is closed and flashing when the door is open.
- While pressing dash button Check output single on the button white wire to electronic control box.

4. Door does not work at all from dash switch and the remote control

- Check fuse of the door system.
- Check the battery voltage on the electronic control box main supply plug.

OTHERS

- Check the belt for damage.
- Check the belt's length.
- If needed, readjust the belt for 6-7 teeth (as per installation manual).